

## Anti-ARID1A Antibody (2S979)

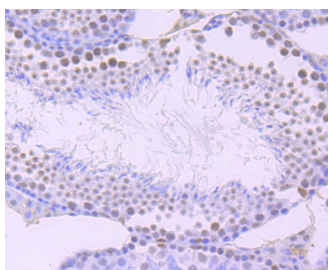
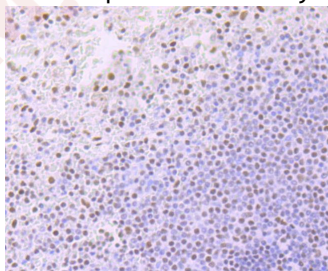
### Product Details

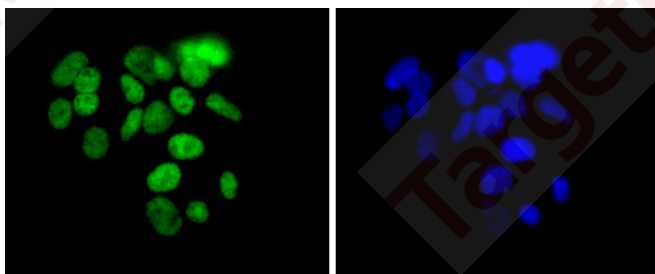
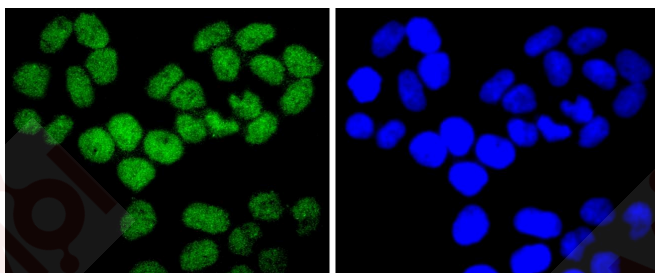
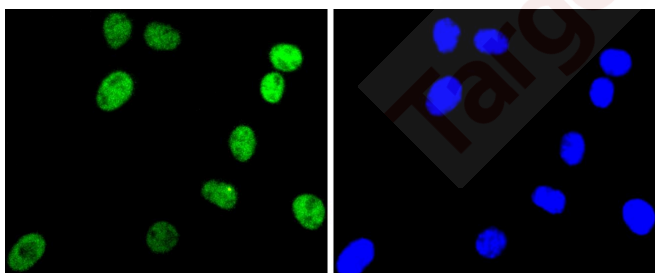
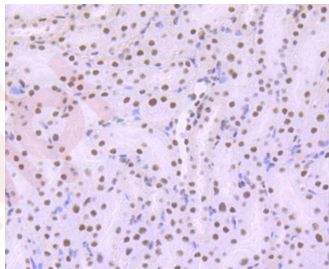
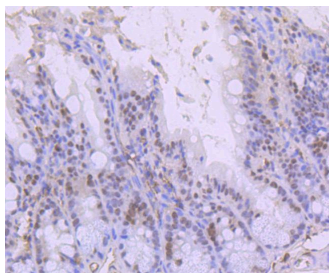
Ig Type:	IgG
Reactivity:	Human,Mouse,Rat
Conjugation:	Unconjugated
Clone:	2S979
Purification:	ProA affinity purified

### Applications

#### Verified Activity:

1. Immunohistochemical analysis of paraffin-embedded human spleen tissue using anti-ARID1A antibody. Counter stained with hematoxylin.
2. Immunohistochemical analysis of paraffin-embedded mouse testis tissue using anti-ARID1A antibody. Counter stained with hematoxylin.
3. Immunohistochemical analysis of paraffin-embedded mouse colon tissue using anti-ARID1A antibody. Counter stained with hematoxylin.
4. Immunohistochemical analysis of paraffin-embedded mouse brain tissue using anti-ARID1A antibody. Counter stained with hematoxylin.
5. ICC staining ARID1A in SH-SY-5Y cells (green). The nuclear counter stain is DAPI (blue). Cells were fixed in paraformaldehyde, permeabilised with 0.25% Triton X100/PBS.
6. ICC staining ARID1A in Hela cells (green). The nuclear counter stain is DAPI (blue). Cells were fixed in paraformaldehyde, permeabilised with 0.25% Triton X100/PBS.
7. ICC staining ARID1A in 293 cells (green). The nuclear counter stain is DAPI (blue). Cells were fixed in paraformaldehyde, permeabilised with 0.25% Triton X100/PBS.





Application: ICC/IF,IHC

Recommended IHC: 1:50-200; ICC/IF: 1:50-200

---

**Properties**

Stability & Storage: Store at -20°C or -80°C for 12 months. Avoid repeated freeze-thaw cycles.

Shipping: Shipping with blue ice.

### Antigen Details

Immunogen:	Recombinant Protein
Uniprot ID:	O14497
Synonyms:	SWI/SNF complex protein p270;SWI-like protein;AT-rich interactive domain-containing protein 1A;C1orf4;Osa homolog 1 (hOSA1);SMARCF1;BRG1-associated factor 250a (BAF250A);B120;hELD;ARID domain-containing protein 1A;BAF250A;SWI/SNF-related, matrix-associated, actin-dependent regulator of chromatin subfamily F member 1;BRG1-associated factor 250 (BAF250);OSA1;ARID1A;BAF250

---

### Research Background

The SWI-SNF complex is involved in the activation of transcription via the remodeling of nucleosome structure in an ATP-dependent manner. Brm (also designated SNF2 $\alpha$ ) and Brg-1 (also designated SNF2 $\beta$ ) are the ATPase subunits of the mammalian SWI-SNF complex. Brm, Brg-1, Ini1 (integrase interactor 1, also designated SNF5), BAF155 (also designated SRG3) and BAF170 are thought to comprise the functional core of the SWI-SNF complex. Addition of Ini1, BAF155 and BAF170 to Brg-1 appears to increase remodeling activity. Other complex subunits, such as BAF250a (p270 or ARID 1A) and BAF250b(ARID1B), are thought to play regulatory roles.

**Inhibitor · Natural Compounds · Compound Libraries · Recombinant Proteins**

This product is for Research Use Only · Not for Human or Veterinary or Therapeutic Use

Tel:781-999-4286 E\_mail:info@targetmol.com Address:34 Washington Street,Wellesley Hills,MA 02481