

Anti-Apolipo E/APOE3 Antibody (7Q652)

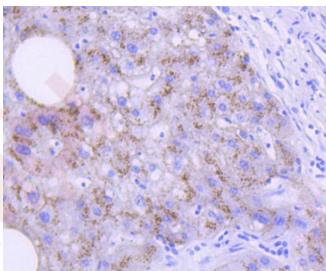
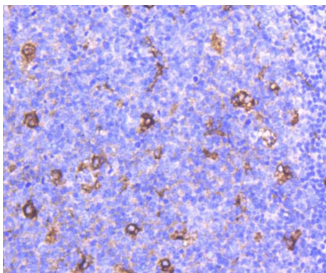
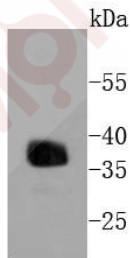
Product Details

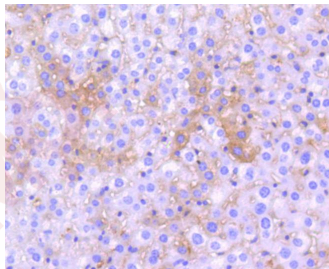
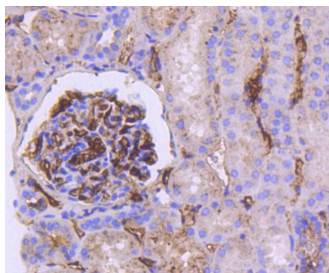
Ig Type:	IgG
Reactivity:	Human,Mouse
Conjugation:	Unconjugated
Molecular Weight:	Theoretical: 36 kDa.
Clone:	7Q652
Purification:	ProA affinity purified

Applications

Verified Activity:

1. Western blot analysis of Apolipoprotein E on human kidney lysates using anti-Apolipoprotein E antibody at 1/1,000 dilution.
2. Immunohistochemical analysis of paraffin-embedded human tonsil tissue using anti-Apolipoprotein E antibody. Counter stained with hematoxylin.
3. Immunohistochemical analysis of paraffin-embedded human liver tissue using anti-Apolipoprotein E antibody. Counter stained with hematoxylin.
4. Immunohistochemical analysis of paraffin-embedded human kidney tissue using anti-Apolipoprotein E antibody. Counter stained with hematoxylin.
5. Immunohistochemical analysis of paraffin-embedded mouse liver tissue using anti-Apolipoprotein E antibody. Counter stained with hematoxylin.





Application: ICC/IF,IHC,IP,WB

Recommended WB: 1:1000-5000; IHC: 1:50-200; ICC/IF: 1:50-200

Properties

Stability & Storage: Store at -20°C or -80°C for 12 months. Avoid repeated freeze-thaw cycles.

Shipping: Shipping with blue ice.

Antigen Details

Immunogen: Recombinant Protein

Uniprot ID: P02649

Synonyms: Apolipoprotein E

Research Background

Apolipoprotein-E (apoE) is a protein component of plasma lipoproteins that mediates the binding, internalization and catabolism of lipoprotein particles. It can serve as a ligand for several lipoprotein receptors, including the LDL (ApoB/E) receptor and the hepatic apoE (chylomicron remnant) receptor. apoE is produced in most organs and occurs in all plasma lipoprotein fractions, constituting 10-20% of VLDL (very low density lipoprotein) and 1-2% of HDL (high density lipoprotein). Three major isoforms of apoE have been described in human (E2, E3 and E4) which differ by only one or two amino acids. Estrogen receptor has been shown to upregulate apoE gene expression via the ER α -mediated pathway, indicating a potential role for apoE in atherosclerosis. This is consistent with studies in mice in which plasma apoE levels were raised, thereby protecting the mice from diet-induced atherosclerosis. apoE has also been shown to be a potent inhibitor of proliferation and thus may play a role in angiogenesis, tumor cell growth and metastasis.

Inhibitor · Natural Compounds · Compound Libraries · Recombinant Proteins

This product is for Research Use Only · Not for Human or Veterinary or Therapeutic Use

Tel:781-999-4286 E_mail:info@targetmol.com Address:34 Washington Street,Wellesley Hills,MA 02481