

Anti-AP2M1 Antibody (9R605)

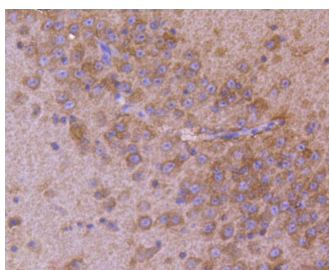
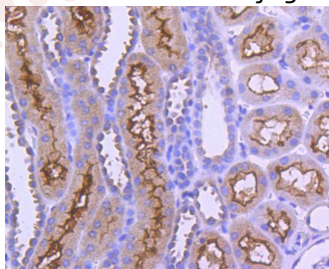
Product Details

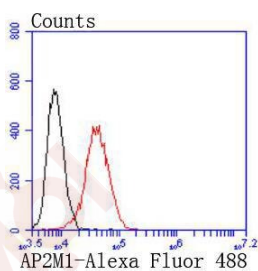
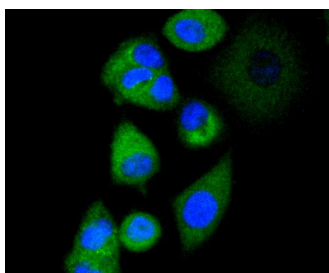
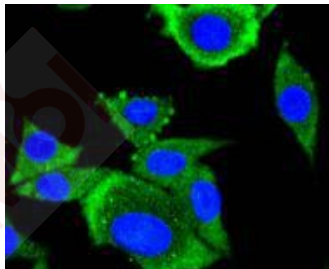
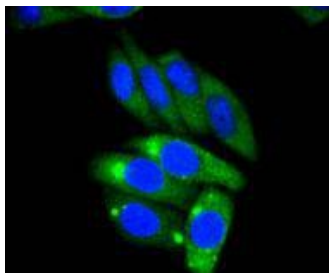
Ig Type:	IgG
Reactivity:	Human,Mouse,Rat
Conjugation:	Unconjugated
Molecular Weight:	Theoretical: 50 kDa.
Clone:	9R605
Purification:	ProA affinity purified

Applications

Verified Activity:

1. Immunohistochemical analysis of paraffin-embedded human kidney tissue using anti-AP2M1 antibody. Counter stained with hematoxylin.
2. Immunohistochemical analysis of paraffin-embedded mouse brain tissue using anti-AP2M1 antibody. Counter stained with hematoxylin.
3. ICC staining AP2M1 in HepG2 cells (green). The nuclear counter stain is DAPI (blue). Cells were fixed in paraformaldehyde, permeabilised with 0.25% Triton X100/PBS.
4. ICC staining AP2M1 in SH-SY-5Y cells (green). The nuclear counter stain is DAPI (blue). Cells were fixed in paraformaldehyde, permeabilised with 0.25% Triton X100/PBS.
5. ICC staining AP2M1 in MCF-7 cells (green). The nuclear counter stain is DAPI (blue). Cells were fixed in paraformaldehyde, permeabilised with 0.25% Triton X100/PBS.
6. Flow cytometric analysis of PANC-1 cells with AP2M1 antibody at 1/50 dilution (red) compared with an unlabelled control (cells without incubation with primary antibody; black). Alexa Fluor 488-conjugated goat anti rabbit IgG was used as the secondary antibody.





Application: FCM,ICC,IHC,WB

Recommended WB: 1:500-1000; IHC: 1:50-200; ICC: 1:50-200; FCM: 1:50-100

Properties

Stability & Storage: Store at -20°C or -80°C for 12 months. Avoid repeated freeze-thaw cycles.

Shipping: Shipping with blue ice.

Antigen Details

Immunogen: Recombinant Protein

Uniprot ID: Q96CW1

Synonyms: Clathrin coat assembly protein AP50;Clathrin coat-associated protein AP50;Adaptin-mu2; KIAA0109;AP-2 mu chain;Clathrin assembly protein complex 2 mu medium chain;Adaptor protein complex AP-2 subunit mu;CLAPM1;HA2 50 kDa subunit;Plasma membrane adaptor AP-2 50 kDa protein;AP-2 complex subunit mu;Adaptor-related protein complex 2 subunit mu; AP2M1

Research Background

Adaptins are heterotetrameric subunits of adaptors, which are complexes involved in the formation of Clathrin-coated pits for vesicle-mediated endocytosis. Clathrin and its associated heterotetrameric protein complexes make up the main protein components of the coat surrounding the cytoplasmic face of coated vesicles. The Adaptin family, comprising α , β , β' and γ classes, is also responsible for the transport of ligand-receptor complexes from plasma membranes and the trans-Golgi network to lysosomes. Two main types of adaptor proteins (APs), AP-1 and AP-2, are found in Clathrin-coated structures located at the Golgi complex and the plasma membrane of mammalian cells, respectively. Adaptor protein complex 2 (AP-2) is composed of two large Adaptins ($\alpha 1A/AP2A1$ and $\beta 1/AP2B1$), a medium Adaptin ($\mu 2/AP-2m1$) and a small Adaptin ($\sigma 2 \text{ long}/AP2S1$). AP-2m1, a 435 amino acid protein, links Clathrin to receptors in coated vesicles.

Inhibitor · Natural Compounds · Compound Libraries · Recombinant Proteins

This product is for Research Use Only · Not for Human or Veterinary or Therapeutic Use

Tel:781-999-4286 E_mail:info@targetmol.com Address:34 Washington Street,Wellesley Hills,MA 02481