

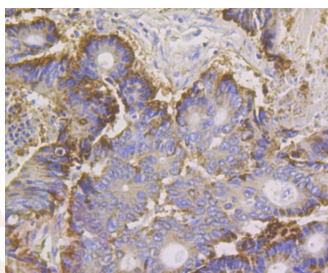
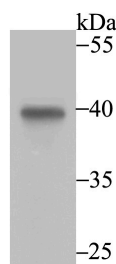
Anti-ANXA4 Antibody (3T392)

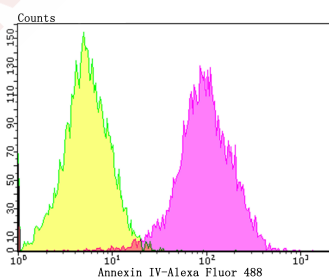
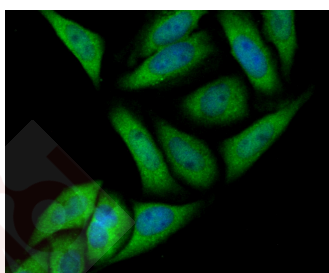
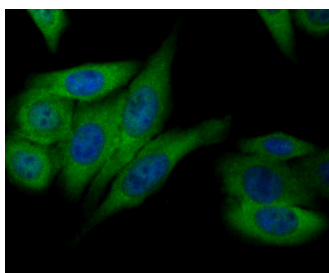
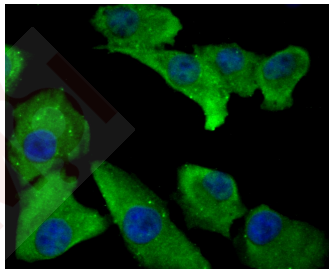
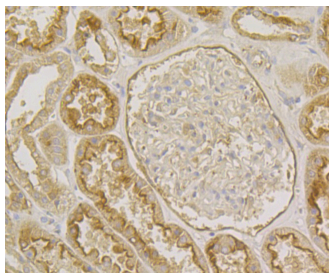
Product Details

| | |
|-------------------|------------------------|
| Ig Type: | IgG |
| Reactivity: | Human |
| Conjugation: | Unconjugated |
| Molecular Weight: | Theoretical: 36 kDa. |
| Clone: | 3T392 |
| Purification: | ProA affinity purified |

Applications

- Verified Activity:
1. Western blot analysis of Annexin IV on human liver tissue lysate using anti-Annexin IV antibody at 1/2,000 dilution.
 2. Immunohistochemical analysis of paraffin-embedded human colon cancer tissue using anti-Annexin IV antibody. Counter stained with hematoxylin.
 3. Immunohistochemical analysis of paraffin-embedded human kidney tissue using anti-Annexin IV antibody. Counter stained with hematoxylin.
 4. ICC staining Annexin IV in A549 cells (green). The nuclear counter stain is DAPI (blue). Cells were fixed in paraformaldehyde, permeabilised with 0.25% Triton X100/PBS.
 5. ICC staining Annexin IV in HepG2 cells (green). The nuclear counter stain is DAPI (blue). Cells were fixed in paraformaldehyde, permeabilised with 0.25% Triton X100/PBS.
 6. ICC staining Annexin IV in SiHa cells (green). The nuclear counter stain is DAPI (blue). Cells were fixed in paraformaldehyde, permeabilised with 0.25% Triton X100/PBS.
 7. Flow cytometric analysis of HepG2 cells with Annexin IV antibody at 1/100 dilution (purple) compared with an unlabelled control (cells without incubation with primary antibody; yellow). Alexa Fluor 488-conjugated goat anti-rabbit IgG was used as the secondary antibody.





Application: FCM, ICC, IF, IHC, WB

Recommended WB: 1:500-2000; IHC: 1:50-200; ICC:IF: 1:50-200; FCM: 1:50-100

Properties

Stability & Storage: Store at -20°C or -80°C for 12 months. Avoid repeated freeze-thaw cycles.

Shipping: Shipping with blue ice.

Antigen Details

Immunogen: Recombinant Protein: human Annexin IV aa 1-200

Antigen Species: human

Uniprot ID: P09525

Research Background

The annexin family of calcium-binding proteins is composed of at least ten mammalian genes. It is characterized by a conserved core domain which binds to phospholipids in a Ca⁺⁺-dependent manner and a unique amino terminal region which may confer binding specificity. Annexin family members have been implicated as regulators of such diverse processes as ion flux, endocytosis and exocytosis, and cellular adhesion. For example, the crystal structure of Annexin III has suggested a hydrophilic amino terminus with possible Ca⁺⁺ channel activity. Similarly, Annexin V has ion channel properties. Annexin IV, also referred to as endonexin, functions to regulate Cl⁻ flux by mediating calmodulin kinase II (CaMKII) activity and Annexin V has been shown to regulate PKC activity.

Inhibitor · Natural Compounds · Compound Libraries · Recombinant Proteins

This product is for Research Use Only · Not for Human or Veterinary or Therapeutic Use

Tel:781-999-4286 E_mail:info@targetmol.com Address:34 Washington Street,Wellesley Hills,MA 02481