

Anti-ANXA2 Antibody (4Q629)

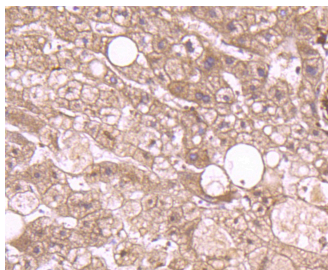
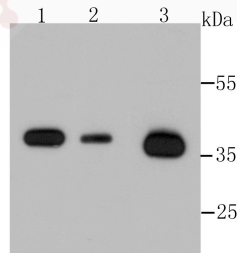
Product Details

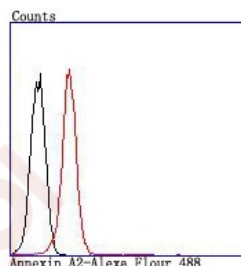
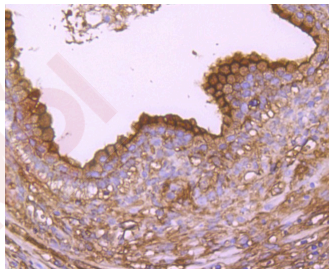
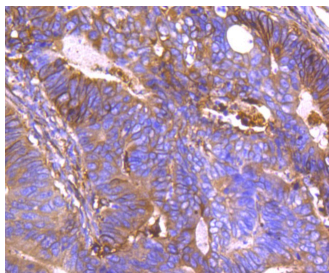
Ig Type:	IgG
Reactivity:	Human,Mouse,Rat
Conjugation:	Unconjugated
Molecular Weight:	Theoretical: 38 kDa.
Clone:	4Q629
Purification:	ProA affinity purified

Applications

Verified Activity:

1. Western blot analysis of Annexin A2 on different cells lysates using anti-Annexin A2 antibody at 1/500 dilution. Positive control: Lane 1: Hela, Lane 2: Human kidney, Lane 3: Murine testis.
2. Immunohistochemical analysis of paraffin-embedded human liver tissue using anti-Annexin A2 antibody. Counter stained with hematoxylin.
3. Immunohistochemical analysis of paraffin-embedded human colon cancer tissue using anti-Annexin A2 antibody. Counter stained with hematoxylin.
4. Immunohistochemical analysis of paraffin-embedded human prostate tissue using anti-Annexin A2 antibody. Counter stained with hematoxylin.
5. ICC staining Annexin A2 in Hela cells (green). The nuclear counter stain is DAPI (blue). Cells were fixed in paraformaldehyde, permeabilised with 0.25% Triton X100/PBS.
6. Flow cytometric analysis of K562 cells with Annexin A2 antibody at 1/100 dilution (red) compared with an unlabelled control (cells without incubation with primary antibody; black).





Application: FCM, ICC/IF, IHC, WB

Recommended WB: 1:500-2000; IHC: 1:50-200; ICC/IF: 1:100-200; FCM: 1:50-200

Properties

Stability & Storage: Store at -20°C or -80°C for 12 months. Avoid repeated freeze-thaw cycles.

Shipping: Shipping with blue ice.

Antigen Details

Immunogen: Recombinant Protein

Uniprot ID: P07355

Synonyms: ANXA2; p36; Annexin II; Lipocortin II; ANX2L4; PAP-IV; Chromobindin-8; CAL1H; Annexin A2; ANX2; LPC2DP36; LIP2PAP-IV; LPC2D

Research Background

The annexin family of calcium-binding proteins is composed of at least ten mammalian genes and is characterized by a conserved core domain which binds phospholipids in a Ca²⁺-dependent manner and a unique amino-terminal region which may confer binding specificity. The interaction between these proteins and biological membranes has led to the hypothesis that they are involved in cellular trafficking processes such as endocytosis, exocytosis and

A DRUG SCREENING EXPERT

cellular adhesion. Annexin I, alternatively referred to as lipocortin, has been implicated as a mediator of the inflammatory response produced by glucocorticoids and as an inhibitor of cPLA2, a potent mediator of inflammation. Annexin II, also called p36, exists as a monomer or as a heterotetramer, complexed with the S-100-related protein p11. This complex is termed calpactin I. In the tetrameric form, Annexin II is an efficient substrate of PKC family and Src pp60.

Inhibitor · Natural Compounds · Compound Libraries · Recombinant Proteins

This product is for Research Use Only · Not for Human or Veterinary or Therapeutic Use

Tel:781-999-4286 E_mail:info@targetmol.com Address:34 Washington Street,Wellesley Hills,MA 02481