

Anti-Phospho-ANAPC1 (Ser688) Polyclonal Antibody

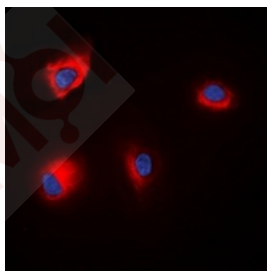
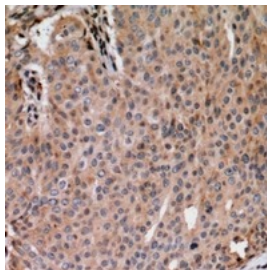
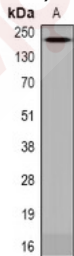
Product Details

Ig Type:	IgG
Reactivity:	Human,Mouse
Conjugation:	Unconjugated
Molecular Weight:	Theoretical: 216 kDa.
Purification:	The antibody was purified by immunogen affinity chromatography.

Applications

Verified Activity:

1. Western blot analysis of ANAPC1 (phospho-Ser688) expression in HEK293 LPS-treated whole cell lysates.
2. Immunohistochemical analysis of ANAPC1 (phospho-Ser688) staining in human breast cancer formalin fixed paraffin embedded tissue section. The section was then incubated with the antibody at room temperature and detected using an HRP conjugated compact polymer system. DAB was used as the chromogen. The section was then counterstained with haematoxylin and mounted with DPX.
3. Immunofluorescent analysis of ANAPC1 (phospho-Ser688) staining in HEK293T cells. Formalin-fixed cells were permeabilized with 0.1% Triton X-100 in TBS for 5-10 minutes and blocked with 3% BSA-PBS for 30 minutes at room temperature. Cells were probed with the primary antibody in 3% BSA-PBS and incubated overnight at 4 C in a hidified chamber. Cells were washed with PBST and incubated with a DyLight 594-conjugated secondary antibody (red) in PBS at room temperature in the dark. DAPI was used to stain the cell nuclei (blue).



A DRUG SCREENING EXPERT

Application: IF,IHC,WB

Recommended WB: 1:500-1000; IHC: 1:50-100; IF: 1:100-300

Properties

Stability & Storage: Store at -20°C or -80°C for 12 months. Avoid repeated freeze-thaw cycles.

Shipping: Shipping with blue ice.

Antigen Details

Immunogen: KLH conjugated synthetic peptide: encompassing a sequence within the center region of human ANAPC1

Antigen Species: human

Uniprot ID: Q9H1A4

Synonyms: p-ANAPC1 (Ser688);p-ANAPC1 (S688);ANAPC1 (p-Ser688);ANAPC1 (p-S688)

Inhibitor · Natural Compounds · Compound Libraries · Recombinant Proteins

This product is for Research Use Only · Not for Human or Veterinary or Therapeutic Use

Tel:781-999-4286 E_mail:info@targetmol.com Address:34 Washington Street,Wellesley Hills,MA 02481
