

Anti-AMY1A Antibody (3A532)

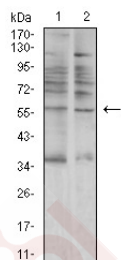
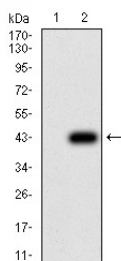
Product Details

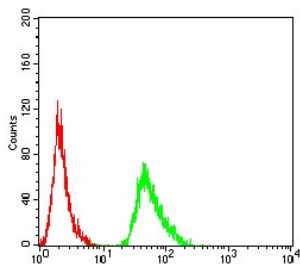
Reactivity:	Human,Rat
Conjugation:	Unconjugated
Molecular Weight:	Theoretical: 54 kDa.
Clone:	3A532
Purification:	ProA affinity purified

Applications

Verified Activity:

1. Western blot analysis of AMY1A on human AMY1A recombinant protein using anti-AMY1A antibody at 1/1,000 dilution.
2. Western blot analysis of AMY1A on HEK293 (1) and AMY1A-hlgGfc transfected HEK293 (2) cell lysate using anti-AMY1A antibody at 1/1,000 dilution.
3. Western blot analysis of AMY1A on A549 and C6 cell lysate using anti-AMY1A antibody at 1/1,000 dilution.
4. Flow cytometric analysis of MCF-7 cells with AMY1A antibody at 1/100 dilution (green) compared with an unlabelled control (cells without incubation with primary antibody; red).





Application: FCM,WB

Recommended WB: 1:500-1000; FCM: 1:50-100

Properties

Stability & Storage: Store at -20°C or -80°C for 12 months. Avoid repeated freeze-thaw cycles.

Shipping: Shipping with blue ice.

Antigen Details

Immunogen: Recombinant Protein

Uniprot ID: P04745

Research Background

Amylases are secreted proteins that hydrolyze 1,4-alpha-glucoside bonds in oligosaccharides and polysaccharides, and thus catalyze the first step in digestion of dietary starch and glycogen. The human genome has a cluster of several amylase genes that are expressed at high levels in either salivary gland or pancreas. This gene encodes an amylase isoenzyme produced by the salivary gland. Alternative splicing results in multiple transcript variants encoding the same protein.

Inhibitor · Natural Compounds · Compound Libraries · Recombinant Proteins

This product is for Research Use Only · Not for Human or Veterinary or Therapeutic Use

Tel:781-999-4286 E_mail:info@targetmol.com Address:34 Washington Street,Wellesley Hills,MA 02481
