

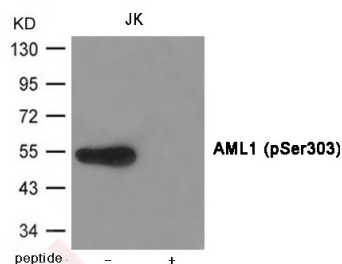
## Anti-Phospho-RUNX1 (Ser303) Polyclonal Antibody

## Product Details

Ig Type:	IgG
Reactivity:	Human,Mouse,Rat
Conjugation:	Unconjugated
Molecular Weight:	Actual: 50 kDa.
Purification:	Antibodies were produced by immunizing rabbits with synthetic phosphopeptide and KLH conjugates. Antibodies were purified by affinity-chromatography using epitope-specific phosphopeptide. Non-phospho specific antibodies were removed by chromatography using non-phosphopeptide.

## Applications

Verified Activity: 1. Western blot analysis of extracts from JK cells using AML1 (Phospho-Ser303) Antibody TMAC-00176. The lane on the right is treated with the antigen-specific peptide.



Application: WB

## Properties

Stability & Storage: Store at -20°C or -80°C for 12 months. Avoid repeated freeze-thaw cycles.

Shipping: Shipping with blue ice.

## Antigen Details

Immunogen:	Peptide sequence around phosphorylation site of serine 303 (T-A-F(p)-S-D) derived from Human AML1
Antigen Species:	human
Uniprot ID:	Q01196
Synonyms:	p-RUNX1 (S303);p-RUNX1 (Ser303);RUNX1 (p-S303);RUNX1 (p-Ser303)

## Research Background

CBF binds to the core site, 5'-PYGPGGT-3', of a number of enhancers and promoters, including murine leukemia virus, polyomavirus enhancer, T-cell receptor enhancers, LCK, IL-3 and GM-CSF promoters. The alpha subunit binds DNA and appears to have a role in the development of normal hematopoiesis. Isoform AML-1L interferes with the transactivation activity of RUNX1. Acts synergistically with ELF4 to transactivate the IL-3 promoter and with ELF2 to transactivate the mouse BLK promoter. Inhibits KAT6B-dependent transcriptional activation.

**Inhibitor · Natural Compounds · Compound Libraries · Recombinant Proteins**

This product is for Research Use Only · Not for Human or Veterinary or Therapeutic Use

Tel:781-999-4286 E\_mail:info@targetmol.com Address:34 Washington Street,Wellesley Hills,MA 02481