

## Anti-Alpha-tubulin Antibody (4H461)

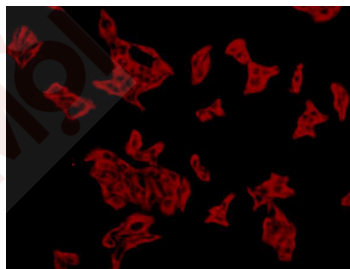
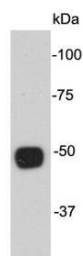
### Product Details

|                   |                           |
|-------------------|---------------------------|
| Reactivity:       | Human,Mouse,Rat,zebrafish |
| Conjugation:      | Unconjugated              |
| Molecular Weight: | Theoretical: 50 kDa.      |
| Clone:            | 4H461                     |
| Purification:     | ProA affinity purified    |

### Applications

#### Verified Activity:

1. Western blot analysis on PC12 cell lysates using anti- $\alpha$ -tubulin mouse mAb.
2. ICC staining  $\alpha$ -tubulin in Hela cells (red). Cells were fixed in paraformaldehyde, permeabilised with 0.25% Triton X100/PBS.



|              |                        |
|--------------|------------------------|
| Application: | FCM,ICC,IHC,WB         |
| Recommended  | WB: 1:5000; ICC: 1:500 |

### Properties

|                      |   |
|----------------------|---|
| Stability & Storage: | Store at -20°C or -80°C for 12 months. Avoid repeated freeze-thaw cycles. |
| Shipping:            | Shipping with blue ice.   |

### Antigen Details

|             |  |
|-------------|--|
| Immunogen:  | Peptide  |
| Uniprot ID: | P68366   |
| Synonyms:   | TBA1A;TBA4A; $\alpha$ tubulin;TBA1B;Tubulin alpha 1;Tubulin alpha 4A chain;alpha tubulin 1;Tubulin alpha 1 chain;Tubulin alpha 4a;Tubulin alpha-1 chain;Testis specific alpha tubulin;FLJ30169;Tuba4a;Detyrosinated alpha Tubulin;Tubulin alpha 1(testis specific);H2 alpha;Tubulin H2 alpha;TUBA1;TUBA 4A |

---

### Research Background

The cytoskeleton consists of three types of cytosolic fibers: microtubules, microfilaments (actin filaments), and intermediate filaments. Globular tubulin subunits comprise the microtubule building block, with  $\alpha/\beta$ -tubulin heterodimers forming the tubulin subunit common to all eukaryotic cells. Acetylation of alpha chains at Lys-40 stabilizes microtubules and affects affinity and processivity of microtubule motors. This modification has a role in multiple cellular functions, ranging from cell motility, cell cycle progression or cell differentiation to intracellular trafficking and signaling.

**Inhibitor · Natural Compounds · Compound Libraries · Recombinant Proteins**

This product is for Research Use Only · Not for Human or Veterinary or Therapeutic Use

Tel:781-999-4286 E\_mail:info@targetmol.com Address:34 Washington Street,Wellesley Hills,MA 02481