

## Anti-Alpha-Synuclein Antibody (10177)

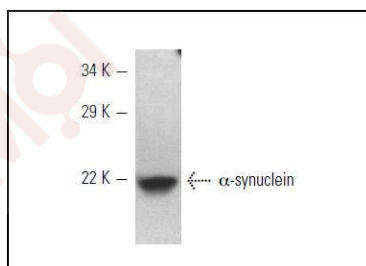
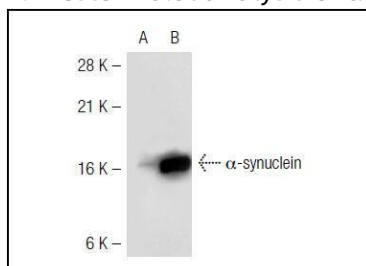
### Product Details

Reactivity:	Human
Conjugation:	Unconjugated
Molecular Weight:	Theoretical: 19 kDa.
Clone:	10177
Purification:	ProA affinity purified

### Applications

#### Verified Activity:

1. Western blot analysis of  $\alpha$ -synuclein expression in non-transfected (A) and human  $\alpha$ -synuclein transfected (B) 293T whole cell lysates.
2. Western blot analysis of  $\alpha$ -synuclein expression in SH-SY5Y whole cell lysate.



Application:	IF,IP,WB
Recommended	WB: 1;100-1000; IP: 1-2 $\mu$ g per 100-500 $\mu$ g of total protein(1 ml of cell lysate)

### Properties

Stability & Storage:	Store at $-20^{\circ}\text{C}$ or $-80^{\circ}\text{C}$ for 12 months. Avoid repeated freeze-thaw cycles.
Shipping:	Shipping with blue ice.

### Antigen Details

Immunogen: Peptide  
Uniprot ID: P37840  
Synonyms: PD1;PARK1;PARK4;NACP

---

### Research Background

The synuclein family members, including  $\alpha$ -synuclein (also designated NACP for non- $\beta$ -Amyloid component) and  $\beta$ -synuclein, are predominantly expressed in the brain and are speculated to be involved in synaptic regulation and neuronal plasticity.  $\alpha$ -synuclein is localized to neuronal cell bodies and synapses.  $\alpha$ -synuclein was first identified as a component of Alzheimer's disease amyloid plaques. Abnormal platelet function in Alzheimer's disease has been demonstrated. During megakaryocytic differentiation  $\alpha$ -synuclein has been found to be upregulated, while  $\beta$ -synuclein is downregulated, indicating that coordinate expression of synucleins may be important during hematopoietic cell differentiation. A mutant form of  $\alpha$ -synuclein has been found in patients with early onset Parkinson's disease.

**Inhibitor · Natural Compounds · Compound Libraries · Recombinant Proteins**

This product is for Research Use Only · Not for Human or Veterinary or Therapeutic Use

Tel:781-999-4286 E\_mail:info@targetmol.com Address:34 Washington Street,Wellesley Hills,MA 02481