

## Anti-Alpha/Beta-Synuclein Antibody (5Q165)

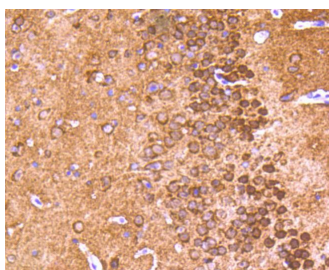
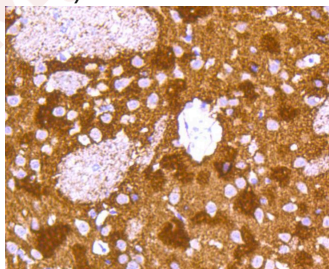
### Product Details

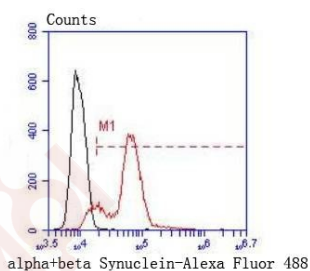
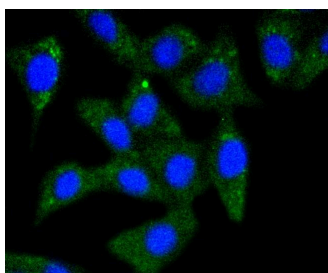
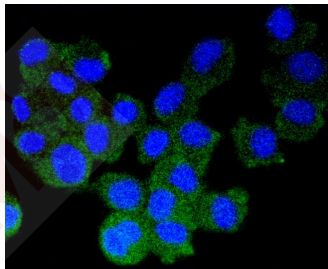
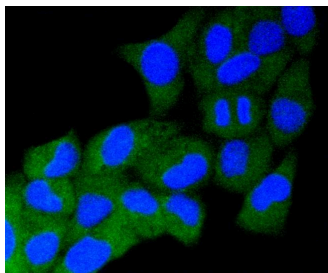
Ig Type:	IgG
Reactivity:	Human,Mouse,Rat
Conjugation:	Unconjugated
Molecular Weight:	Theoretical: 18 kDa.
Clone:	5Q165
Purification:	ProA affinity purified

### Applications

#### Verified Activity:

1. Immunohistochemical analysis of paraffin-embedded rat brain tissue using anti-alpha+beta Synuclein antibody. Counter stained with hematoxylin.
2. Immunohistochemical analysis of paraffin-embedded mouse brain tissue using anti-alpha+beta Synuclein antibody. Counter stained with hematoxylin.
3. ICC staining alpha+beta Synuclein in Hela cells (green). The nuclear counter stain is DAPI (blue). Cells were fixed in paraformaldehyde, permeabilised with 0.25% Triton X100/PBS.
4. ICC staining alpha+beta Synuclein in N2A cells (green). The nuclear counter stain is DAPI (blue). Cells were fixed in paraformaldehyde, permeabilised with 0.25% Triton X100/PBS.
5. ICC staining alpha+beta Synuclein in SH-SY-5Y cells (green). The nuclear counter stain is DAPI (blue). Cells were fixed in paraformaldehyde, permeabilised with 0.25% Triton X100/PBS.
6. Flow cytometric analysis of Hela cells with alpha+beta Synuclein antibody at 1/50 dilution (red) compared with an unlabelled control (cells without incubation with primary antibody; black). Alexa Fluor 488-conjugated goat anti rabbit IgG was used as the secondary antibody.





Application: FCM, ICC/IF, IHC, WB

Recommended WB: 1:1000-2000; IHC: 1:50-200; ICC/IF: 1:50-200; FCM: 1:50-100

### Properties

Stability & Storage: Store at -20°C or -80°C for 12 months. Avoid repeated freeze-thaw cycles.

Shipping: Shipping with blue ice.

### Antigen Details

Immunogen: Recombinant Protein

Uniprot ID: P37840

Synonyms: NACP; PARK4; PARK1; PD1

### Research Background

The synucleins, including  $\alpha$ -synuclein (also designated NACP for nonamyloid component precursor),  $\beta$ -synuclein (also designated PNP 14 for phospho-neuroprotein 14) and  $\gamma$ -synuclein (also designated persyn or BCSG1 for breast cancer-specific gene 1) are presynaptic proteins abundant in neurons. Synucleins are predominantly expressed in the brain and are speculated to be involved in synaptic regulation and neuronal plasticity.  $\alpha$ -Synuclein, identified as a component of Alzheimer's disease amyloid plaques, is localized to neuronal cell bodies and synapses.

## A DRUG SCREENING EXPERT

---

Coordinate expression of  $\alpha$ -synuclein and  $\beta$ -synuclein may be important during hematopoietic cell differentiation. A mutant form of  $\alpha$ -synuclein is found in patients with early onset Parkinson's disease.  $\gamma$ -Synuclein is associated with axonal pathology in Parkinson's disease.

**Inhibitor · Natural Compounds · Compound Libraries · Recombinant Proteins**

This product is for Research Use Only · Not for Human or Veterinary or Therapeutic Use

Tel: 781-999-4286    E\_mail: info@targetmol.com    Address: 34 Washington Street, Wellesley Hills, MA 02481