

## Anti-alpha Tubulin 4A Antibody (6I357)

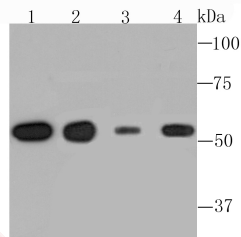
### Product Details

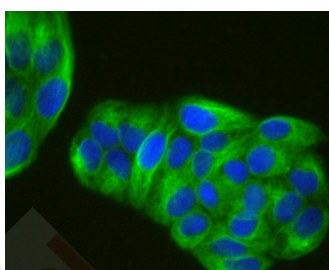
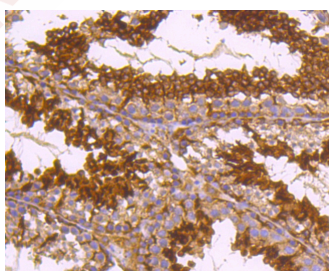
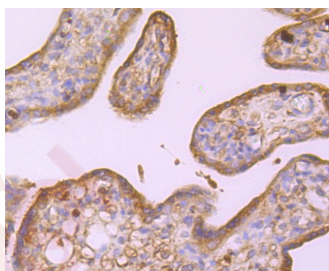
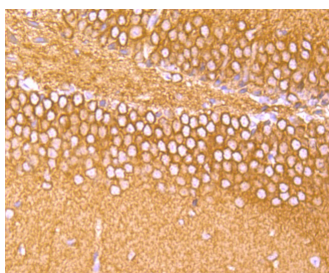
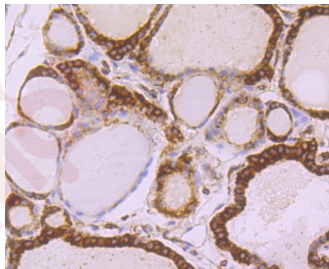
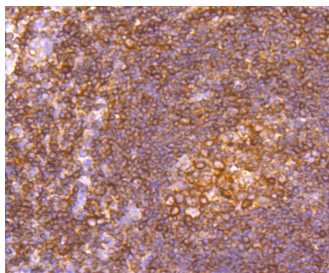
Ig Type:	IgG
Reactivity:	Human,Mouse,Rat
Conjugation:	Unconjugated
Molecular Weight:	Theoretical: 50 kDa.
Clone:	6I357
Purification:	ProA affinity purified

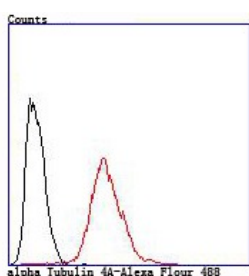
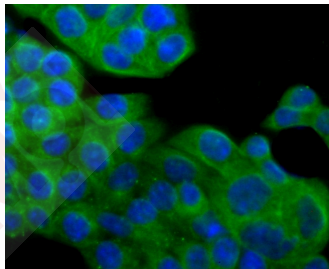
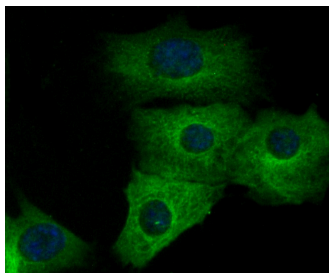
### Applications

#### Verified Activity:

1. Western blot analysis of alpha Tubulin 4A on different cell lysate using anti-alpha Tubulin 4A antibody at 1/1,000 dilution. Positive control: Lane1: A431, Lane2: Rat brain tissue, Lane3: NIH-3T3, Lane4: PC-12.
2. Immunohistochemical analysis of paraffin-embedded human tonsil tissue using anti-alpha Tubulin 4A antibody. Counter stained with hematoxylin.
3. Immunohistochemical analysis of paraffin-embedded human thyroid tissue using anti-alpha Tubulin 4A antibody. Counter stained with hematoxylin.
4. Immunohistochemical analysis of paraffin-embedded mouse brain tissue using anti-alpha Tubulin 4A antibody. Counter stained with hematoxylin.
5. Immunohistochemical analysis of paraffin-embedded human placenta tissue using anti-alpha Tubulin 4A antibody. Counter stained with hematoxylin.
6. Immunohistochemical analysis of paraffin-embedded mouse testes tissue using anti-alpha Tubulin 4A antibody. Counter stained with hematoxylin.
7. ICC staining alpha Tubulin 4A in Hela cells (green). The nuclear counter stain is DAPI (blue). Cells were fixed in paraformaldehyde, permeabilised with 0.25% Triton X100/PBS.
8. ICC staining alpha Tubulin 4A in NIH-3T3 cells (green). The nuclear counter stain is DAPI (blue). Cells were fixed in paraformaldehyde, permeabilised with 0.25% Triton X100/PBS.
9. ICC staining alpha Tubulin 4A in SW480 cells (green). The nuclear counter stain is DAPI (blue). Cells were fixed in paraformaldehyde, permeabilised with 0.25% Triton X100/PBS.
10. Flow cytometric analysis of Hela cells with alpha Tubulin 4A antibody at 1/100 dilution (red) compared with an unlabelled control (cells without incubation with primary antibody; black).







Application: FCM, ICC/IF, IHC, IP, WB

Recommended WB: 1:500-2000; IHC: 1:100-200; ICC/IF: 1:100-200; FCM: 1:50-100

### Properties

Stability & Storage: Store at -20°C or -80°C for 12 months. Avoid repeated freeze-thaw cycles.

Shipping: Shipping with blue ice.

### Antigen Details

Immunogen: Recombinant Protein

Uniprot ID: P68366

Synonyms: Tubulin alpha 1 (testis specific); Detyrosinated alpha Tubulin; TUBA1; Testis specific alpha tubulin; TUBA 4A;  $\alpha$  tubulin; Tubulin alpha 1; Tubulin alpha-1 chain; H2 alpha; TBA1B; alpha tubulin 1; Tubulin H2 alpha; FLJ30169; Tuba4a; TBA1A; Tubulin alpha 1 chain; Tubulin alpha 4a; TBA4A; Tubulin alpha 4A chain

### Research Background

Tubulin is a major cytoskeleton component that has five distinct forms, designated  $\alpha$ ,  $\beta$ ,  $\gamma$ ,  $\delta$  and e Tubulin.  $\alpha$  and  $\beta$  Tubulins form heterodimers which multimerize to form a microtubule filament. Multiple  $\beta$  Tubulin isoforms ( $\beta 1$ ,  $\beta 2$ ,  $\beta 3$ ,  $\beta 4$ ,  $\beta 5$ ,  $\beta 6$  and  $\beta 8$ ) have been characterized and are expressed in mammalian tissues.  $\beta 1$  and  $\beta 4$  are present throughout the cytosol,  $\beta 2$  is present in the nuclei and nucleoplasm, and  $\beta 3$  is a neuron-specific cytoskeletal protein.  $\gamma$  Tubulin forms the gammaosome, which is required for nucleating microtubule filaments at the centrosome. Both  $\delta$  Tubulin and e Tubulin are associated with the centrosome.  $\delta$  Tubulin is a homolog of the Chlamydomonas  $\delta$  Tubulin Uni3 and is found in association with the centrioles, whereas e Tubulin localizes to the pericentriolar material. e Tubulin exhibits a cell-cycle-specific pattern of localization, first associating with only the older of the centrosomes in a newly duplicated pair and later associating with both centrosomes.

**Inhibitor · Natural Compounds · Compound Libraries · Recombinant Proteins**

This product is for Research Use Only · Not for Human or Veterinary or Therapeutic Use

Tel:781-999-4286 E\_mail:info@targetmol.com Address:34 Washington Street,Wellesley Hills,MA 02481