

Anti-Alpha-Synuclein Antibody (2M749)

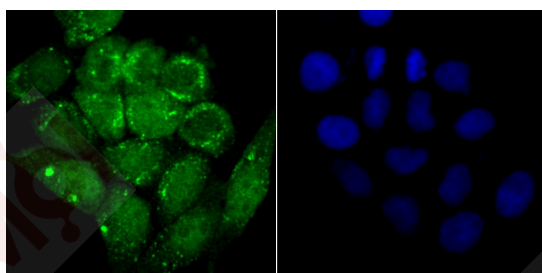
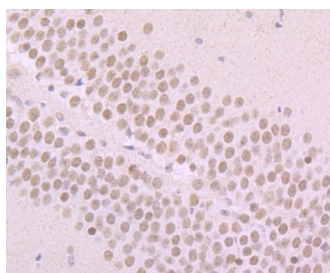
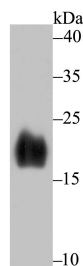
Product Details

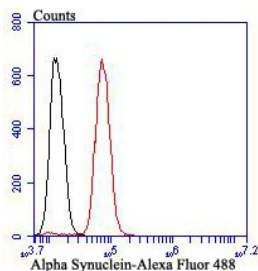
Ig Type:	IgG
Reactivity:	Human,Mouse
Conjugation:	Unconjugated
Molecular Weight:	Theoretical: 16 kDa.
Clone:	2M749
Purification:	ProA affinity purified

Applications

Verified Activity:

1. Western blot analysis of Alpha Synuclein on human fetal brain tissue lysate using anti-Alpha Synuclein antibody at 1/500 dilution.
2. Immunohistochemical analysis of paraffin-embedded mouse brain tissue using anti-Alpha Synuclein antibody. Counter stained with hematoxylin.
3. ICC staining Alpha Synuclein in Hela cells (green). The nuclear counter stain is DAPI (blue). Cells were fixed in paraformaldehyde, permeabilised with 0.25% Triton X100/PBS.
4. Flow cytometric analysis of SH-SY-5Y cells with Alpha Synuclein antibody at 1/100 dilution (red) compared with an unlabelled control (cells without incubation with primary antibody; black). Alexa Fluor 488-conjugated goat anti-rabbit IgG was used as the secondary antibody.





Application: FCM,ICC,IF,IHC,IP,WB

Recommended WB: 1:500-2000; IHC: 1:50-200; ICC: 1:50-200; FCM: 1:50-100

Properties

Stability & Storage: Store at -20°C or -80°C for 12 months. Avoid repeated freeze-thaw cycles.

Shipping: Shipping with blue ice.

Antigen Details

Immunogen: Recombinant Protein

Uniprot ID: P37840

Synonyms: NACP;PARK4;PD1;PARK1

Research Background

The synuclein family members, including α -synuclein (also designated NACP for non- β -Amyloid component) and β -synuclein, are predominantly expressed in the brain and are speculated to be involved in synaptic regulation and neuronal plasticity. α -synuclein is localized to neuronal cell bodies and synapses. α -synuclein was first identified as a component of Alzheimer's disease amyloid plaques. Abnormal platelet function in Alzheimer's disease has been demonstrated. During megakaryocytic differentiation α -synuclein has been found to be upregulated, while β -synuclein is downregulated, indicating that coordinate expression of synucleins may be important during hematopoietic cell differentiation. A mutant form of α -synuclein has been found in patients with early onset Parkinson's disease.

Inhibitor · Natural Compounds · Compound Libraries · Recombinant Proteins

This product is for Research Use Only · Not for Human or Veterinary or Therapeutic Use

Tel:781-999-4286 E_mail:info@targetmol.com Address:34 Washington Street,Wellesley Hills,MA 02481
