

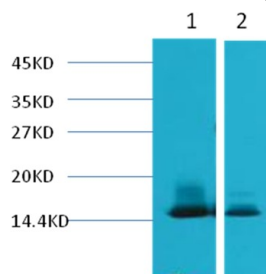
## Anti-Alpha Lactalbumin/LALBA Antibody (6Y943)

### Product Details

Reactivity:	Human,B
Conjugation:	Unconjugated
Molecular Weight:	Actual: 18 kDa.
Clone:	6Y943
Purification:	Affinity purification using immunogen.

### Applications

Verified Activity: 1. Western blot analysis of 1) Human Milk, 2) Milk, using TMAC-00158 diluted at 1:3,000.



Application:	WB
Recommended	WB: 1:1000-3000

### Properties

Stability & Storage:	Store at -20°C or -80°C for 12 months. Avoid repeated freeze-thaw cycles.
Shipping:	Shipping with blue ice.

### Antigen Details

Uniprot ID:	P00709
Synonyms:	$\alpha$ Lactalbumin/LALBA;lactalbumin alpha;LYZL7;lactalbumin $\alpha$

### Research Background

In primates, alpha-lactalbumin expression is upregulated in response to the hormone prolactin and increases the production of lactose.  $\alpha$ -Lactalbumin forms the regulatory subunit of the lactose synthase (LS) heterodimer and  $\beta$ -1,4-galactosyltransferase ( $\beta$ 4Gal-T1) forms the catalytic component.

**Inhibitor · Natural Compounds · Compound Libraries · Recombinant Proteins**

This product is for Research Use Only. Not for Human or Veterinary or Therapeutic Use

Tel:781-999-4286 E\_mail:info@targetmol.com Address:34 Washington Street,Wellesley Hills,MA 02481