

## Anti-Serpin A1 Antibody (8W352)

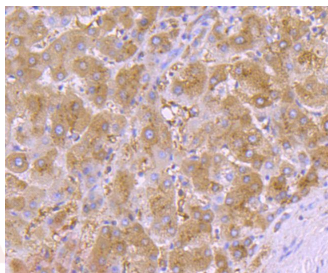
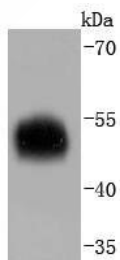
### Product Details

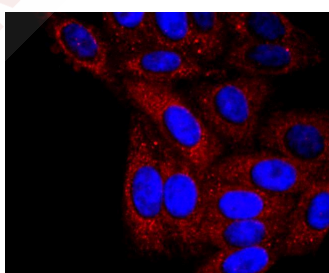
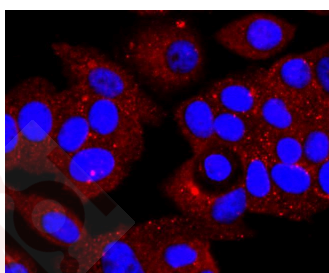
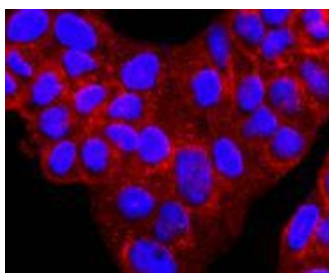
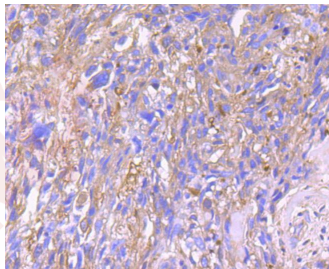
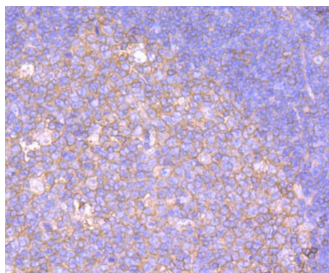
Ig Type:	IgG
Reactivity:	Human
Conjugation:	Unconjugated
Molecular Weight:	Theoretical: 47 kDa.
Clone:	8W352
Purification:	ProA affinity purified

### Applications

#### Verified Activity:

1. Western blot analysis of alpha 1 Antitrypsin on human spleen lysates using anti-alpha 1 Antitrypsin antibody at 1/1,000 dilution.
2. Immunohistochemical analysis of paraffin-embedded human liver tissue using anti-alpha 1 Antitrypsin antibody. Counter stained with hematoxylin.
3. Immunohistochemical analysis of paraffin-embedded human spleen tissue using anti-alpha 1 Antitrypsin antibody. Counter stained with hematoxylin.
4. Immunohistochemical analysis of paraffin-embedded human breast carcinoma tissue using anti-alpha 1 Antitrypsin antibody. Counter stained with hematoxylin.
5. ICC staining alpha 1 Antitrypsin in Hela cells (red). The nuclear counter stain is DAPI (blue). Cells were fixed in paraformaldehyde, permeabilised with 0.25% Triton X100/PBS.
6. ICC staining alpha 1 Antitrypsin in MCF-7 cells (red). The nuclear counter stain is DAPI (blue). Cells were fixed in paraformaldehyde, permeabilised with 0.25% Triton X100/PBS.
7. ICC staining alpha 1 Antitrypsin in HepG2 cells (red). The nuclear counter stain is DAPI (blue). Cells were fixed in paraformaldehyde, permeabilised with 0.25% Triton X100/PBS.





Application: ICC/IF,IHC,IP,WB

Recommended WB: 1:1000-5000; IHC: 1:50-200; ICC/IF: 1:50-200

---

### Properties

Stability & Storage: Store at -20°C or -80°C for 12 months. Avoid repeated freeze-thaw cycles.

Shipping: Shipping with blue ice.

### Antigen Details

Immunogen: Recombinant Protein  
Uniprot ID: P01009  
Synonyms: Alpha-1-antitrypsin;Alpha-1 protease inhibitor;Serpin A1;Alpha-1-antiproteinase

---

### Research Background

Cumulative damage to lung tissue by Neutrophil Elastase is responsible for the development of pulmonary emphysema, an irreversible lung disease characterized by loss of lung elasticity. a 1-antitrypsin (AAT), a 394 amino acid hepatic acute phase protein, predominantly inhibits Neutrophil Elastase. AAT is highly expressed in liver and in cultured hepatoma cells and, to a lesser extent, in macrophages. AAT is a highly polymorphic glycosylated serum protein with characteristic isoelectric-focusing patterns for most variants. The gene encoding AAT maps to a region of human chromosome 14 that includes a related serine protease inhibitor (serpin) gene which encodes corticosteroid-binding globulin. Oxidation of the methionine 358 residue in the active center of AAT results in a dramatic decrease in inhibitory activity towards elastase. AAT also has a moderate affinity for plasmin and Thrombin. AAT deficiency is associated with a 20-30 fold increased risk of precocious pulmonary emphysema.

**Inhibitor · Natural Compounds · Compound Libraries · Recombinant Proteins**

This product is for Research Use Only · Not for Human or Veterinary or Therapeutic Use

Tel:781-999-4286 E\_mail:info@targetmol.com Address:34 Washington Street,Wellesley Hills,MA 02481