

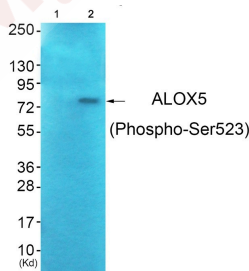
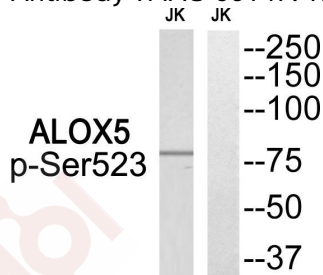
## Anti-Phospho-ALOX5 (Ser523) Polyclonal Antibody 2

### Product Details

Ig Type:	IgG
Reactivity:	Human,Rat
Conjugation:	Unconjugated
Molecular Weight:	Actual: 78 kDa.
Purification:	Antibodies were produced by immunizing rabbits with synthetic phosphopeptide and KLH conjugates. Antibodies were purified by affinity-chromatography using epitope-specific phosphopeptide. Non-phospho specific antibodies were removed by chromatography using non-phosphopeptide.

### Applications

- Verified Activity:
1. Western blot analysis of extracts from Jurkat cells, using ALOX5 (Phospho-Ser523) antibody TMAC-00147. The lane on the right is treated with the synthesized peptide.
  2. Western blot analysis of extracts from JK cells (Lane 2), using ALOX5 (Phospho-Ser523) Antibody TMAC-00147. The lane on the left is treated with synthesized peptide.



Application:	WB
Recommended	WB: 1:500-3000

### Properties

- Stability & Storage: Store at -20°C or -80°C for 12 months. Avoid repeated freeze-thaw cycles.
- Shipping: Shipping with blue ice.

### Antigen Details

Immunogen: Peptide sequence around phosphorylation site of serine 523 (R-K-S(p)-K-G) derived from Human ALOX5

Antigen Species: human

Uniprot ID: P09917

Synonyms: ALOX5 (p-S523);ALOX5 (p-Ser523);p-ALOX5 (S523);p-ALOX5 (Ser523)

---

### Research Background

Catalyzes the first step in leukotriene biosynthesis, and thereby plays a role in inflammatory processes.

**Inhibitor · Natural Compounds · Compound Libraries · Recombinant Proteins**

This product is for Research Use Only · Not for Human or Veterinary or Therapeutic Use

Tel:781-999-4286 E\_mail:info@targetmol.com Address:34 Washington Street,Wellesley Hills,MA 02481