

Anti-Alkaline Phosphatase/ALPL Antibody (3F463)

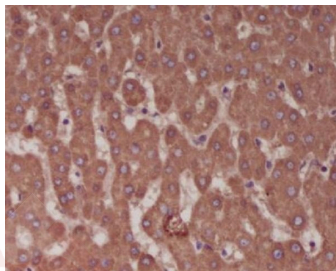
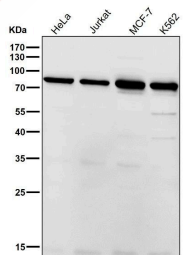
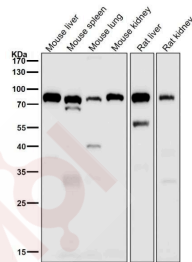
Product Details

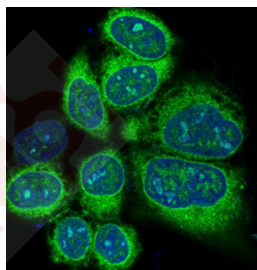
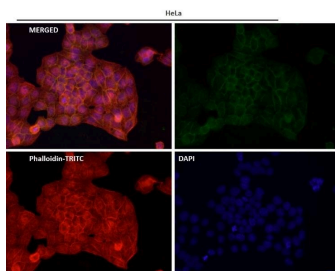
Ig Type:	IgG
Reactivity:	Human,Mouse,Rat
Conjugation:	Unconjugated
Molecular Weight:	Theoretical: 57 kDa.
Clone:	3F463
Purification:	Affinity-chromatography

Applications

Verified Activity:

1. All lanes use the Antibody at 1:1W dilution for 1 hour at room temperature.
2. All lanes use the Antibody at 1:1W dilution for 1 hour at room temperature.
3. Immunohistochemical analysis of paraffin-embedded human liver, using Alkaline Phosphatase Antibody.
4. Immunofluorescent analysis using the Antibody at 1:50 dilution.
5. Immunofluorescent analysis of Hela cells, using Alkaline Phosphatase Antibody .





Application: WB,IHC,ICC/IF,IP,FCM

Recommended WB: 1:1000-5000; IHC: 1:100-200; ICC/IF: 1:50-200; IP: 1:20-50; FCM: 1:20-100

Properties

Stability & Storage: Store at 2°C-8°C for 1 month. Store at -20°C or -80°C for 12 months. Avoid repeated freeze-thaw cycles.

Shipping: Shipping with blue ice.

Antigen Details

Immunogen: A synthesized peptide: human Alkaline phosphatase

Antigen Species: human

Uniprot ID: P05186

Synonyms: HPPA;TNSALP;AP-TNAP;HOPS;TNS-ALP;HPPC;HPPO;TNAP;TNALP;HPPI;APT NAP

Research Background

Alkaline phosphatase that metabolizes various phosphate compounds and plays a key role in skeletal mineralization and adaptive thermogenesis.

Inhibitor · Natural Compounds · Compound Libraries · Recombinant Proteins

This product is for Research Use Only · Not for Human or Veterinary or Therapeutic Use

Tel:781-999-4286 E_mail:info@targetmol.com Address:34 Washington Street,Wellesley Hills,MA 02481