

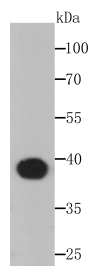
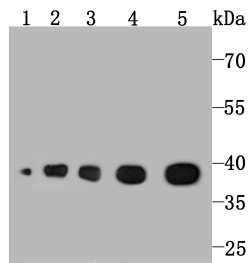
## Anti-ALDOA Antibody (1Q763)

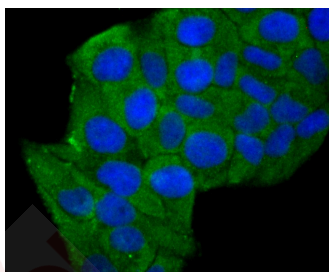
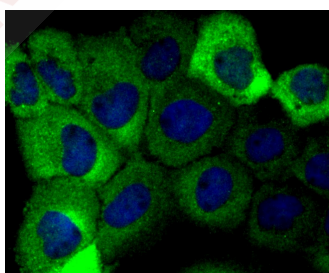
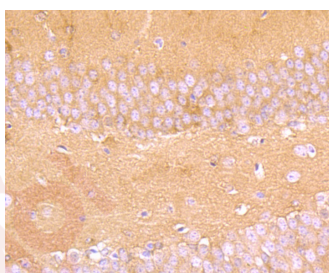
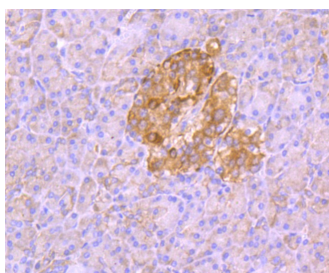
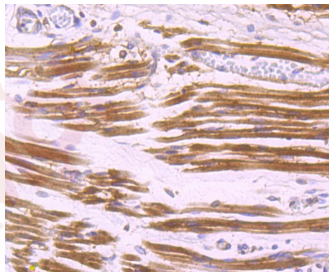
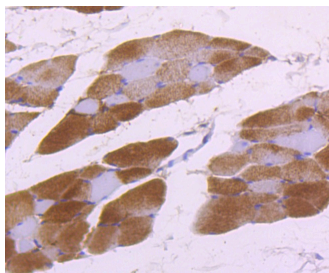
### Product Details

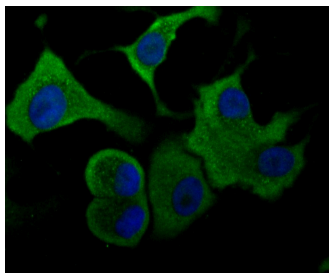
Ig Type:	IgG
Reactivity:	Human,Mouse,Rat,zebrafish
Conjugation:	Unconjugated
Molecular Weight:	Theoretical: 39 kDa.
Clone:	1Q763
Purification:	ProA affinity purified

### Applications

1. Western blot analysis of Aldolase on different lysates using anti-Aldolase antibody at 1/1,000 dilution. Positive control: Lane 1: A549, Lane 2: Hela, Lane 3: Mouse liver, Lane 4: Rat liver, Lane 5: Rat spleen.
2. Western blot analysis of Aldolase on Zebrafish tissue lysates using anti-Aldolase antibody at 1/200 dilution.
3. Immunohistochemical analysis of paraffin-embedded rat skeletal muscle tissue using anti-Aldolase antibody. Counter stained with hematoxylin.
4. Immunohistochemical analysis of paraffin-embedded human fetal skeletal muscle tissue using anti-Aldolase antibody. Counter stained with hematoxylin.
- Verified Activity:
5. Immunohistochemical analysis of paraffin-embedded human pancreas tissue using anti-Aldolase antibody. Counter stained with hematoxylin.
6. Immunohistochemical analysis of paraffin-embedded mouse brain tissue using anti-Aldolase antibody. Counter stained with hematoxylin.
7. ICC staining Aldolase in A431 cells (green). The nuclear counter stain is DAPI (blue). Cells were fixed in paraformaldehyde, permeabilised with 0.25% Triton X100/PBS.
8. ICC staining Aldolase in Hela cells (green). The nuclear counter stain is DAPI (blue). Cells were fixed in paraformaldehyde, permeabilised with 0.25% Triton X100/PBS.
9. ICC staining Aldolase in SK-Br-3 cells (green). The nuclear counter stain is DAPI (blue). Cells were fixed in paraformaldehyde, permeabilised with 0.25% Triton X100/PBS.







Application: ICC,IF,IHC,WB

Recommended WB: 1:500-2000; IHC: 1:50-200; ICC:IF: 1:50-200

### Properties

Stability & Storage: Store at -20°C or -80°C for 12 months. Avoid repeated freeze-thaw cycles.

Shipping: Shipping with blue ice.

### Antigen Details

Immunogen: Recombinant Protein

Uniprot ID: P04075

### Research Background

Fructose 1,6-bisphosphate aldolase catalyses the reversible condensation of glycerone-P and glyceraldehyde 3-phosphate into fructose 1,6-bisphosphate. Fructose 1,6-bisphosphate aldolase exists as three forms: the muscle-specific Aldolase A; the liver-specific Aldolase B; and the brain-specific Aldolase C. Aldolase A, B and C arose from a common ancestral gene from which Aldolase B first diverged. Aldolase A is one of the most highly-conserved enzymes known, with only about 2% of the residues changing per 100 million years. Aldolase B is regulated by the hormones insulin and glucagon, and has been implicated in hereditary fructose intolerance disease. Aldolase C is a polypeptide that is exclusively expressed in Purkinje cells. Aldolase C-positive Purkinje cells are organized in the cerebellum as stripes or bands that run from anterior to posterior across the cerebellum and alternate with bands of Aldolase C-negative Purkinje cells.

**Inhibitor · Natural Compounds · Compound Libraries · Recombinant Proteins**

This product is for Research Use Only · Not for Human or Veterinary or Therapeutic Use

Tel:781-999-4286 E\_mail:info@targetmol.com Address:34 Washington Street,Wellesley Hills,MA 02481