

Anti-ALCAM Antibody (9Q637)

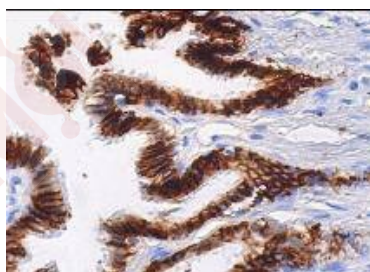
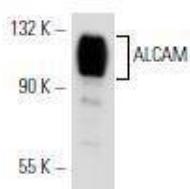
Product Details

Reactivity:	Human,Mouse,Rat
Conjugation:	Unconjugated
Molecular Weight:	Theoretical: 100-105 kDa.
Clone:	9Q637
Purification:	ProA affinity purified

Applications

Verified Activity:

1. Western blot analysis of ALCAM expression in SK-N-SH whole cell lysate.
2. Immunoperoxidase staining of formalin fixed, paraffin-embedded human bronchus tissue showing membrane staining of respiratory epithelial cells.



Application: IF,IHC-P,IP,WB

Recommended WB: 1:100-1000; IHC-P: 1:50-500; IP: 1-2 µg per 100-500 µg of total protein(1 ml of cell lysate)

Properties

Stability & Storage: Store at 2°C-8°C for 12 months, do not freeze.

Shipping: Shipping with blue ice.

Antigen Details

Immunogen: Peptide
Uniprot ID: Q13740
Synonyms: MEMD;ALCAM;CD166;CD6L;KG-CAM

Research Background

Activated leukocyte cell adhesion molecule (ALCAM), expressed on activated leukocytes, T cells, B cells and monocytes, is a member of the immunoglobulin superfamily (IgSF) and identified as a CD6 ligand. CD6 is a type I membrane protein in the scavenger receptor cysteine rich protein superfamily that acts in T cell adhesion and costimulation. ALCAM mediates thymocyte-thymic epithelial cell adhesion via homophilic (ALCAM-ALCAM) and heterophilic (ALCAMCD6) interactions involving a previously undescribed protein-protein interaction between a member of the scavenger receptor cysteine rich protein superfamily and the immunoglobulin superfamily.

Inhibitor · Natural Compounds · Compound Libraries · Recombinant Proteins

This product is for Research Use Only · Not for Human or Veterinary or Therapeutic Use

Tel:781-999-4286 E_mail:info@targetmol.com Address:34 Washington Street,Wellesley Hills,MA 02481