

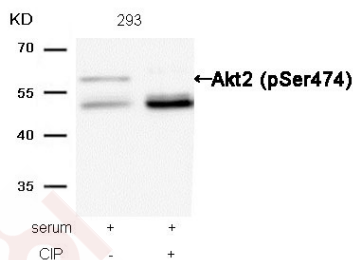
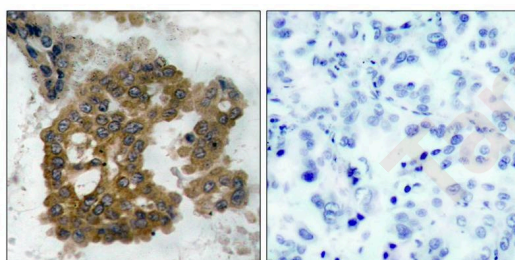
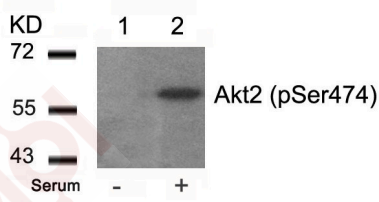
Anti-Phospho-AKT2 (Ser474) Polyclonal Antibody

Product Details

| | |
|---------------|--|
| Ig Type: | IgG |
| Reactivity: | Human,Mouse,Rat |
| Conjugation: | Unconjugated |
| Purification: | Antibodies were produced by immunizing rabbits with synthetic phosphopeptide and KLH conjugates. Antibodies were purified by affinity-chromatography using epitope-specific phosphopeptide. Non-phospho specific antibodies were removed by chromatography using non-phosphopeptide. |

Applications

- Verified Activity:
- Western blot analysis of extracts from 293 cells untreated(lane 1) or treated with serum(lane 2) using Akt2(Phospho-Ser474) Antibody TMAC-00129.
 - Immunohistochemical analysis of paraffin-embedded human lung carcinoma tissue using Akt2(Phospho-Ser474) Antibody TMAC-00129(left) or the same antibody preincubated with blocking peptide(right).
 - Western blot analysis of extracts from 293 cells, treated with serum or calf intestinal phosphatase (CIP), using Akt2 (Phospho-Ser474) Antibody TMAC-00129.



Application: IHC,WB

A DRUG SCREENING EXPERT

Properties

Stability & Storage: Store at 2°C-8°C for 1 month. Store at -20°C or -80°C for 12 months. Avoid repeated freeze-thaw cycles.

Shipping: Shipping with blue ice.

Antigen Details

Immunogen: Peptide sequence around phosphorylation site of serine 474 (Q-F-S(p)-Y-S) derived from Human Akt2

Antigen Species: human

Uniprot ID: P31751

Synonyms: AKT2 (p-Ser474);p-AKT2 (Ser474);AKT2 (p-S474);p-AKT2 (S474)

Research Background

General protein kinase capable of phosphorylating several known proteins.

Inhibitor · Natural Compounds · Compound Libraries · Recombinant Proteins

This product is for Research Use Only· Not for Human or Veterinary or Therapeutic Use

Tel:781-999-4286 E_mail:info@targetmol.com Address:34 Washington Street,Wellesley Hills,MA 02481