

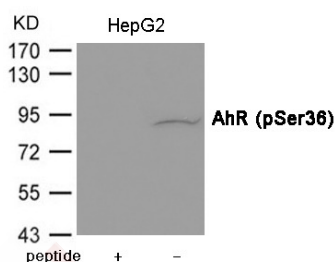
Anti-Phospho-AHR (Ser36) Polyclonal Antibody 2

Product Details

Ig Type:	IgG
Reactivity:	Human,Mouse,Rat
Conjugation:	Unconjugated
Molecular Weight:	Actual: 90 kDa.
Purification:	Antibodies were produced by immunizing rabbits with synthetic phosphopeptide and KLH conjugates. Antibodies were purified by affinity-chromatography using epitope-specific phosphopeptide. Non-phospho specific antibodies were removed by chromatography using non-phosphopeptide.

Applications

Verified Activity: 1. Western blot analysis of extracts from HepG2 cells using AhR (Phospho-Ser36) Antibody TMAC-00101. The lane on the left is treated with the antigen-specific peptide.



Application: WB

Properties

Stability & Storage: Store at -20°C or -80°C for 12 months. Avoid repeated freeze-thaw cycles.

Shipping: Shipping with blue ice.

Antigen Details

Immunogen:	Peptide sequence around phosphorylation site of Serine 36 (N-P-S(p)-K-R) derived from Human AhR
Antigen Species:	human
Uniprot ID:	P35869/A9YTQ3
Synonyms:	p-AHR (Ser36);AHR (p-S36);p-AHR (S36);AHR (p-Ser36)

Research Background

Ligand-activated transcriptional activator. Binds to the XRE promoter region of genes it activates. Activates the expression of multiple phase I and II xenobiotic chemical metabolizing enzyme genes (such as the CYP1A1 gene). Mediates biochemical and toxic effects of halogenated aromatic hydrocarbons. Involved in cell-cycle regulation. Likely to play an important role in the development and maturation of many tissues.

Inhibitor · Natural Compounds · Compound Libraries · Recombinant Proteins

This product is for Research Use Only · Not for Human or Veterinary or Therapeutic Use

Tel:781-999-4286 E_mail:info@targetmol.com Address:34 Washington Street,Wellesley Hills,MA 02481