

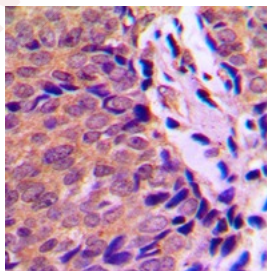
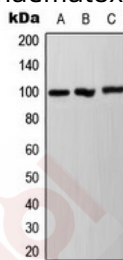
## Anti-Phospho-AHR (Ser36) Polyclonal Antibody

### Product Details

Ig Type:	IgG
Reactivity:	Human,Mouse,Rat
Conjugation:	Unconjugated
Molecular Weight:	Theoretical: 100 kDa.
Purification:	The antibody was purified by immunogen affinity chromatography.

### Applications

- Verified Activity:
1. Western blot analysis of Ah Receptor (phospho-Ser36) expression in A431, HepG2, NIH3T3 whole cell lysates.
  2. Immunohistochemical analysis of Ah Receptor (phospho-Ser36) staining in human breast cancer formalin fixed paraffin embedded tissue section. The section was then incubated with the antibody at room temperature and detected using an HRP conjugated compact polymer system. DAB was used as the chromogen. The section was then counterstained with haematoxylin and mounted with DPX.



Application:	IHC,WB
Recommended	WB: 1:500-1000; IHC: 1:50-100

### Properties

- Stability & Storage: Store at -20°C or -80°C for 12 months. Avoid repeated freeze-thaw cycles.
- Shipping: Shipping with blue ice.

**Antigen Details**

Immunogen: KLH conjugated synthetic peptide: encompassing a sequence within the N-term region of human Ah Receptor

Antigen Species: human

Uniprot ID: P35869

Synonyms: AHR (p-Ser36);p-AHR (S36);p-AHR (Ser36);AHR (p-S36)

**Inhibitor · Natural Compounds · Compound Libraries · Recombinant Proteins**

This product is for Research Use Only· Not for Human or Veterinary or Therapeutic Use

Tel:781-999-4286 E\_mail:info@targetmol.com Address:34 Washington Street,Wellesley Hills,MA 02481