

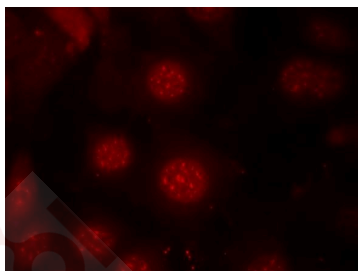
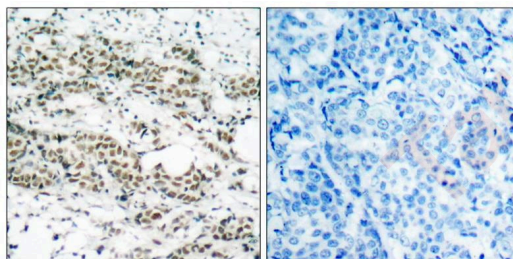
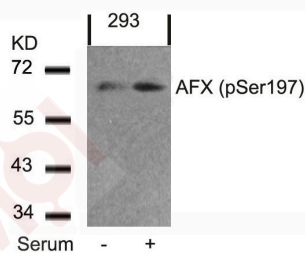
Anti-Phospho-FOXO4 (Ser197) Polyclonal Antibody 2

Product Details

Ig Type:	IgG
Reactivity:	Human,Mouse,Rat
Conjugation:	Unconjugated
Purification:	Antibodies were produced by immunizing rabbits with synthetic phosphopeptide and KLH conjugates. Antibodies were purified by affinity-chromatography using epitope-specific phosphopeptide. Non-phospho specific antibodies were removed by chromatography using non-phosphopeptide.

Applications

- Verified Activity:
- Western blot analysis of extracts from 293 cells untreated or treated with serum using AFX (Phospho-Ser197) Antibody TMAC-00096.
 - Immunohistochemical analysis of paraffin-embedded human breast carcinoma tissue using AFX(Phospho-Ser197) Antibody TMAC-00096(left) or the same antibody preincubated with blocking peptide(right).
 - Immunofluorescence staining of methanol-fixed MCF7 cells using AFX(Phospho-Ser197) Antibody TMAC-00096.



Application:	IF,IHC,WB
Recommended	WB: 1:500-1000; IHC: 1:50-100; IF: 1:100-200

A DRUG SCREENING EXPERT

Properties

Stability & Storage: Store at 2°C-8°C for 1 month. Store at -20°C or -80°C for 12 months. Avoid repeated freeze-thaw cycles.

Shipping: Shipping with blue ice.

Antigen Details

Immunogen: Peptide sequence around phosphorylation site of serine 197 (A-A-S(p)-M-D) derived from Human AFX

Antigen Species: human

Uniprot ID: P98177

Synonyms: FOXO4 (p-Ser197);p-FOXO4 (Ser197);FOXO4 (p-S197);p-FOXO4 (S197)

Research Background

Transcription factor involved in the regulation of the insulin signaling pathway. Binds to insulin-response elements (IREs) and can activate transcription of IGFBP1. Down-regulates expression of HIF1A and suppresses hypoxia-induced transcriptional activation of HIF1A-modulated genes. Also involved in negative regulation of the cell cycle.

Inhibitor · Natural Compounds · Compound Libraries · Recombinant Proteins

This product is for Research Use Only · Not for Human or Veterinary or Therapeutic Use

Tel:781-999-4286 E_mail:info@targetmol.com Address:34 Washington Street,Wellesley Hills,MA 02481