

Anti-Phospho-Adducin  $\alpha/\beta$  (Ser726/713) Polyclonal Antibody

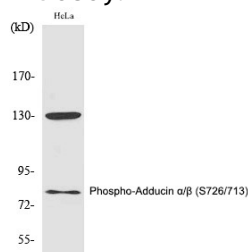
## Product Details

Ig Type:	IgG
Reactivity:	Human,Mouse,Rat
Conjugation:	Unconjugated
Molecular Weight:	Actual: 80 kDa.
Purification:	The antibody was affinity-purified from rabbit antiserum by affinity-chromatography using epitope-specific immunogen.

## Applications

## Verified Activity:

1. Western Blot analysis of HeLa cells using Phospho-Adducin  $\alpha/\beta$  (S726/713) Polyclonal Antibody.



Application:	ELISA,IF,IHC,WB
Recommended	WB: 1:500-2000; IHC: 1:100-300; IF: 1:200-1000; ELISA: 1:40000

## Properties

Stability & Storage:	Store at $-20^{\circ}\text{C}$ or $-80^{\circ}\text{C}$ for 12 months. Avoid repeated freeze-thaw cycles.
Shipping:	Shipping with blue ice.

## Antigen Details

Immunogen:	A synthesized phosphopeptide: human Adducin $\alpha/\beta$ around the phosphorylation site of S726/713
Antigen Species:	human
Uniprot ID:	P35611
Synonyms:	Adducin $\alpha/\beta$ (p-S726/713);p-Adducin $\alpha/\beta$ (S726/713);Adducin $\alpha/\beta$ (p-Ser726/713);p-Adducin $\alpha/\beta$ (Ser726/713)

**Inhibitor · Natural Compounds · Compound Libraries · Recombinant Proteins**

This product is for Research Use Only. Not for Human or Veterinary or Therapeutic Use

Tel:781-999-4286 E\_mail:info@targetmol.com Address:34 Washington Street,Wellesley Hills,MA 02481