

## Anti-Acetyl-ACSS1 (Lys642) Polyclonal Antibody

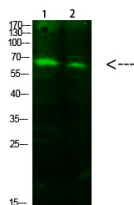
## Product Details

Ig Type:	IgG
Reactivity:	Human,Mouse,Rat
Conjugation:	Unconjugated
Molecular Weight:	Theoretical: 70 kDa.
Purification:	The antibody was affinity-purified from rabbit antiserum by affinity-chromatography using epitope-specific immunogen.

## Applications

## Verified Activity:

1. Western Blot analysis of 1,293T 2,hela cells using primary antibody diluted at 1:1000 (°C overnight). Secondary antibody Goat Anti-rabbit IgG IRDye 800 ( diluted at 1:5000, 1 hour).



Application:	WB
Recommended	WB: 1:500-2000

## Properties

Stability & Storage:	Store at -20°C or -80°C for 12 months. Avoid repeated freeze-thaw cycles.
Shipping:	Shipping with blue ice.

## Antigen Details

Immunogen:	A synthesized acetylpeptide: human ACSS1 around the acetylation site of K642
Antigen Species:	human
Uniprot ID:	Q9NUB1
Synonyms:	ACSS1K642-acetylated;Ac-ACSS1 (K642);Ac-ACSS1K642;Acetyl-ACSS1 (K642);ACSS1K642ac;Ac-ACSS1 (Lys642)

**Inhibitor · Natural Compounds · Compound Libraries · Recombinant Proteins**

This product is for Research Use Only. Not for Human or Veterinary or Therapeutic Use

Tel:781-999-4286 E\_mail:info@targetmol.com Address:34 Washington Street,Wellesley Hills,MA 02481