

Anti-ACE Antibody (1S991)

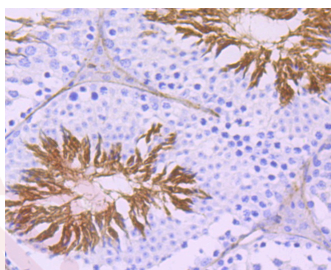
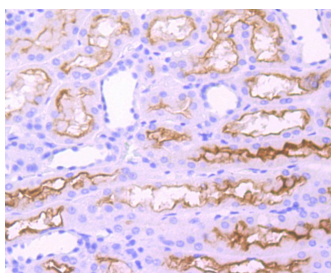
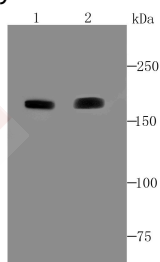
Product Details

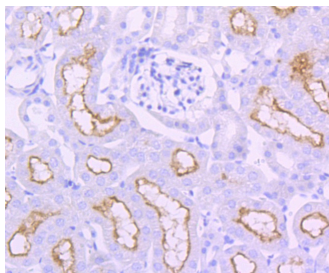
Ig Type:	IgG
Reactivity:	Human,Mouse
Conjugation:	Unconjugated
Molecular Weight:	Theoretical: 160 kDa.
Clone:	1S991
Purification:	ProA affinity purified

Applications

Verified Activity:

1. Western blot analysis of ACE on human lung (1) and mouse kidney (2) cell lysate using anti-ACE antibody at 1/1,000 dilution.
2. Immunohistochemical analysis of paraffin-embedded human kidney tissue using anti-ACE antibody. Counter stained with hematoxylin.
3. Immunohistochemical analysis of paraffin-embedded mouse testis tissue using anti-ACE antibody. Counter stained with hematoxylin.
4. Immunohistochemical analysis of paraffin-embedded mouse kidney tissue using anti-ACE antibody. Counter stained with hematoxylin.





Application: FCM,IHC,WB

Recommended WB: 1:500-2000; IHC: 1:100-500; FCM: 1:50-100

Properties

Stability & Storage: Store at -20°C or -80°C for 12 months. Avoid repeated freeze-thaw cycles.

Shipping: Shipping with blue ice.

Antigen Details

Immunogen: Recombinant Protein

Uniprot ID: P12821

Synonyms: CD antigen CD143;Angiotensin-converting enzyme;EC 3.4.15.1;Kininase II;Dipeptidyl carboxypeptidase I;DCP DCP1

Research Background

Angiotensin-converting enzyme (ACE) is a carboxy-terminal dipeptidyl exo-peptidase that converts Angiotensin I to the potent vasopressive hormone, Angiotensin II. There are two isoforms of ACE, the pulmonary ACEP and the testicular ACET. ACEP is a glycoprotein expressed in vascular endothelial cells of the lung, liver, adrenal cortex, pancreas, kidney and spleen. The ACET isoform is expressed exclusively in adult testis by developing sperm cells, specifically, late pachytene spermatocytes. Additionally, ACE inactivates bradykinin, a vasodepressor peptide, and is involved in fluid/electrolyte homeostasis. Although it bears significant sequence homology to ACE, ACE2 shows a more restricted pattern of expression. ACE is expressed ubiquitously throughout the vasculature while ACE2 is expressed only in cardiac, renal and testicular cells.

Inhibitor · Natural Compounds · Compound Libraries · Recombinant Proteins

This product is for Research Use Only · Not for Human or Veterinary or Therapeutic Use

Tel:781-999-4286 E_mail:info@targetmol.com Address:34 Washington Street,Wellesley Hills,MA 02481
