

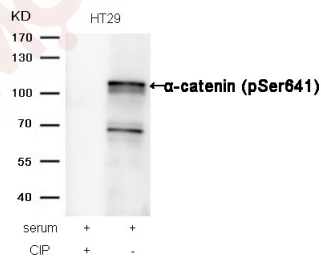
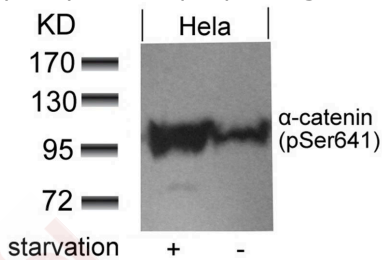
Anti-Phospho- α -catenin (Ser641) Polyclonal Antibody

Product Details

Ig Type:	IgG
Reactivity:	Human,Mouse
Conjugation:	Unconjugated
Purification:	Antibodies were produced by immunizing rabbits with synthetic phosphopeptide and KLH conjugates. Antibodies were purified by affinity-chromatography using epitope-specific phosphopeptide. Non-phospho specific antibodies were removed by chromatography using non-phosphopeptide.

Applications

- Verified Activity:
- Western blot analysis of extracts from HeLa cells untreated or treated with starvation using α -catenin(Phospho-Ser641) antibody TMAC-00053.
 - Western blot analysis of extracts from HT29 cells, treated with serum or calf intestinal phosphatase (CIP), using α -catenin (Phospho-Ser641) Antibody TMAC-00053.



Application:	WB
Recommended	WB: 1:500-1000

Properties

Stability & Storage:	Store at 2°C-8°C for 1 month. Store at -20°C or -80°C for 12 months. Avoid repeated freeze-thaw cycles.
Shipping:	Shipping with blue ice.

Antigen Details

Immunogen: Peptide sequence around phosphorylation site of serine 641 (D-D-S(p)-D-F) derived from Human α -catenin

Antigen Species: human

Uniprot ID: P35221

Synonyms: α -catenin (p-S641);p- α -catenin (S641);p- α -catenin (Ser641); α -catenin (p-Ser641)

Research Background

Associates with the cytoplasmic domain of a variety of cadherins. The association of catenins to cadherins produces a complex which is linked to the actin filament network, and which seems to be of primary importance for cadherins cell-adhesion properties. May play a crucial role in cell differentiation.

Inhibitor · Natural Compounds · Compound Libraries · Recombinant Proteins

This product is for Research Use Only· Not for Human or Veterinary or Therapeutic Use

Tel:781-999-4286 E_mail:info@targetmol.com Address:34 Washington Street,Wellesley Hills,MA 02481