

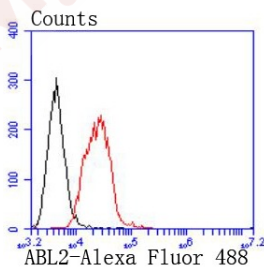
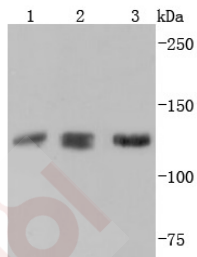
Anti-ABL2 Antibody (4X240)

Product Details

Ig Type:	IgG
Reactivity:	Human,Mouse,Rat
Conjugation:	Unconjugated
Molecular Weight:	Theoretical: 128 kDa.
Clone:	4X240
Purification:	ProA affinity purified

Applications

- Verified Activity:
- Western blot analysis of ABL2 on different lysates using anti-ABL2 antibody at 1/1,000 dilution. Positive control: Lane 1: HeLa, Lane 2: PC-12, Lane 3: Jurkat.
 - Flow cytometric analysis of Raji cells with ABL2 antibody at 1/50 dilution (red) compared with an unlabelled control (cells without incubation with primary antibody; black). Alexa Fluor 488-conjugated goat anti rabbit IgG was used as the secondary antibody.



Application:	FCM,WB
Recommended	WB: 1:1000-2000; FCM: 1:50-100

Properties

- Stability & Storage: Store at -20°C or -80°C for 12 months. Avoid repeated freeze-thaw cycles.
- Shipping: Shipping with blue ice.

Antigen Details

Immunogen:	Recombinant Protein
Uniprot ID:	P42684
Synonyms:	ABL2_HUMAN;Abelson murine leukemia viral oncogene homolog 2;ARG;Abelson related gene protein;Abelson tyrosine-protein kinase 2;Tyrosine-protein kinase ARG;Tyrosine kinase ARG; ABL 2;ABLL;v abl Abelson murine leukemia viral oncogene homolog 2;Abelson-related gene protein;Tyrosine protein kinase ABL2

Research Background

The Abl oncogene was initially identified as the viral transforming gene of Abelson murine leukemia virus (A-MuLV). The major translational product of c-Abl has been identified as a protein with tyrosine kinase activity and an SH2 domain. The Abl oncogene is implicated in several human leukemias including chronic myelocytic leukemia (CML), in which it undergoes a (9;22) chromosomal translocation and produces the Philadelphia (Ph1) chromosome. The molecular consequence of this translocation is the generation of a chimeric Bcr/c-Abl mRNA encoding activated Abl protein tyrosine kinase. The related protein tyrosine kinase Arg, also designated Abl2, contains an SH2 and an SH3 domain. Arg has been shown to interact with and to phosphorylate c-Crk.

Inhibitor · Natural Compounds · Compound Libraries · Recombinant Proteins

This product is for Research Use Only · Not for Human or Veterinary or Therapeutic Use

Tel:781-999-4286 E_mail:info@targetmol.com Address:34 Washington Street,Wellesley Hills,MA 02481