

Anti-ABCG1 Antibody (6T884)

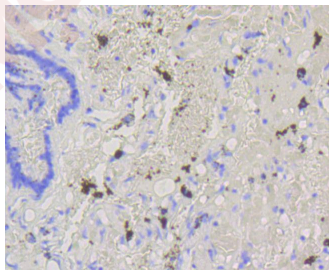
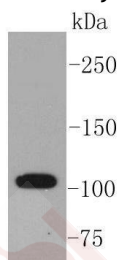
Product Details

Ig Type:	IgG
Reactivity:	Human,Rat
Conjugation:	Unconjugated
Molecular Weight:	Theoretical: 110 kDa.
Clone:	6T884
Purification:	ProA affinity purified

Applications

Verified Activity:

1. Western blot analysis of ABCG1 on THP-1 cell lysates using anti-ABCG1 antibody at 1/1,000 dilution.
2. Immunohistochemical analysis of paraffin-embedded human lung tissue using anti-ABCG1 antibody. Counter stained with hematoxylin.



Application: ICC/IF,IHC,WB

Recommended WB: 1:1000-2000; IHC: 1:50-200; ICC/IF: 1:50-200

Properties

Stability & Storage: Store at -20°C or -80°C for 12 months. Avoid repeated freeze-thaw cycles.

Shipping: Shipping with blue ice.

Antigen Details

Immunogen:	Recombinant Protein
Uniprot ID:	P45844
Synonyms:	WHITE1;White protein homolog ATP binding cassette transporter 8;WHT1;ATP-binding cassette sub-family G member 1;ATP-binding cassette transporter 8;homolog of Drosophila white;Abc8; ABCG1;White protein homolog;ABC transporter 8;MGC34313;ATP-binding cassette, sub family G WHITE member 1;ATP-binding cassette transporter member 1 of subfamily G

Research Background

ABCG1 (also designated ABC8 or human white gene), a member of the evolutionary conserved family of ATP-binding cassette (ABC) transporters, exhibits high homology with the Drosophila white gene. ABC transporters couple the energy of ATP hydrolysis to the translocation of various molecules across biological membranes. These proteins contain characteristic ATP-binding domains and transmembrane domains which form a channel-like structure for transport. ABCG1 functions to regulate cholesterol and phospholipid transport in macrophages. ABCG1 is highly expressed in several tissues, including brain, spleen, lung and placenta, and has been localized to the cell surface and intracellular compartments of cholesterol-laden macrophages.

Inhibitor · Natural Compounds · Compound Libraries · Recombinant Proteins

This product is for Research Use Only · Not for Human or Veterinary or Therapeutic Use

Tel:781-999-4286 E_mail:info@targetmol.com Address:34 Washington Street,Wellesley Hills,MA 02481