

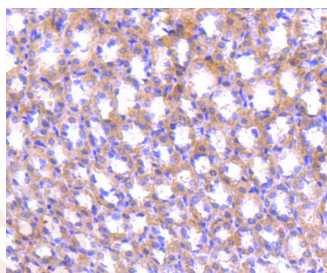
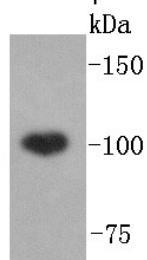
Anti-ABCF1 Antibody (8X278)

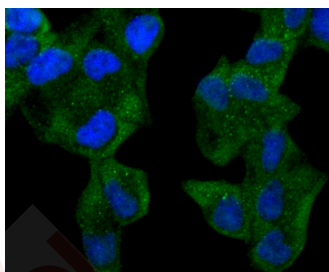
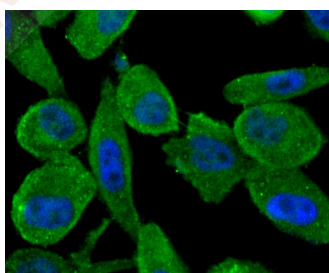
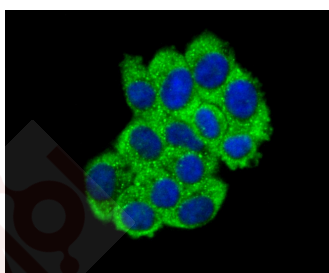
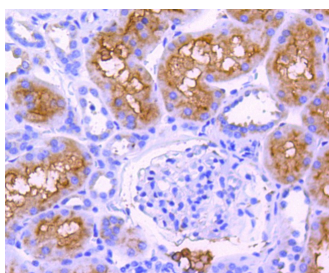
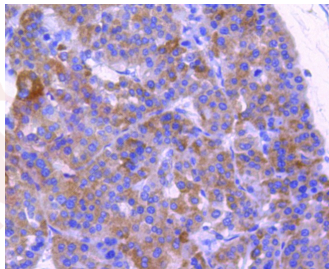
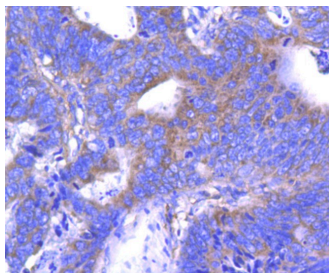
Product Details

| | |
|-------------------|------------------------|
| Ig Type: | IgG |
| Reactivity: | Human,Rat |
| Conjugation: | Unconjugated |
| Molecular Weight: | Theoretical: 96 kDa. |
| Clone: | 8X278 |
| Purification: | ProA affinity purified |

Applications

- Verified Activity:
1. Western blot analysis of ABCF1 on Hela lysates using anti-ABCF1 antibody at 1/1,000 dilution.
 2. Immunohistochemical analysis of paraffin-embedded rat stomach tissue using anti-ABCF1 antibody. Counter stained with hematoxylin.
 3. Immunohistochemical analysis of paraffin-embedded human colon cancer tissue using anti-ABCF1 antibody. Counter stained with hematoxylin.
 4. Immunohistochemical analysis of paraffin-embedded human liver cancer tissue using anti-ABCF1 antibody. Counter stained with hematoxylin.
 5. Immunohistochemical analysis of paraffin-embedded human kidney tissue using anti-ABCF1 antibody. Counter stained with hematoxylin.
 6. ICC staining ABCF1 in HepG2 cells (green). The nuclear counter stain is DAPI (blue). Cells were fixed in paraformaldehyde, permeabilised with 0.25% Triton X100/PBS.
 7. ICC staining ABCF1 in PC-3M cells (green). The nuclear counter stain is DAPI (blue). Cells were fixed in paraformaldehyde, permeabilised with 0.25% Triton X100/PBS.
 8. ICC staining ABCF1 in Hela cells (green). The nuclear counter stain is DAPI (blue). Cells were fixed in paraformaldehyde, permeabilised with 0.25% Triton X100/PBS.





Application: ICC/IF,IHC,WB

Recommended WB: 1:1000-2000; IHC: 1:50-200; ICC/IF: 1:100-500

Properties

Stability & Storage: Store at -20°C or -80°C for 12 months. Avoid repeated freeze-thaw cycles.

Shipping: Shipping with blue ice.

Antigen Details

Immunogen: A synthesized peptide: within aa 796-845 of Human ABCF1

Antigen Species: human

Uniprot ID: Q8NE71

Synonyms: ABCF 1;TNF-alpha-stimulated ABC protein;wu:fc39a05;GCN20;ATP binding cassette 50;ATP binding cassette sub family F member 1;zgc:85667;ABCF1_HUMAN;wu:fb79c06;TNFalpha inducible ATP binding protein;ATP-binding cassette 50;ATP-binding cassette sub-family F member 1;wu:fj94a08;ABC27;ATP binding cassette 50 (TNF alpha stimulated);TNF alpha stimulated ABC protein;AU041969;ATP binding cassette, sub family F (GCN20), member 1; ABC50;EST123147;D17Wsu166e

Research Background

ABCF1 (ATP-binding cassette sub-family F member 1, TNF-alpha-stimulated ABC protein) is a 845 amino acid protein encoded by the human gene ABCF1. ABCF1 belongs to the ABC transporter family (EF3 subfamily) and contains two ABC transporter domains. ABC proteins transport various molecules across extra- and intra-cellular membranes. ABC genes are divided into seven distinct subfamilies (ABC1, MDR/TAP, MRP, ALD, OABP, GCN20, White). Unlike other members of the superfamily, this protein lacks the transmembrane domains which are characteristic of most ABC transporters. ABCF1 is believed to have a role in mRNA translation due to its interaction with eukaryotic initiation factor 2 (eIF2). It is also associated with ribosomes. ABCF1 is ubiquitously expressed and can be induced with TNF. Upon DNA damage, ABCF1 is phosphorylated by either ATM or ATR.

Inhibitor · Natural Compounds · Compound Libraries · Recombinant Proteins

This product is for Research Use Only · Not for Human or Veterinary or Therapeutic Use

Tel:781-999-4286 E_mail:info@targetmol.com Address:34 Washington Street,Wellesley Hills,MA 02481
