

## Anti-Phospho-53BP1 (Ser25) Polyclonal Antibody

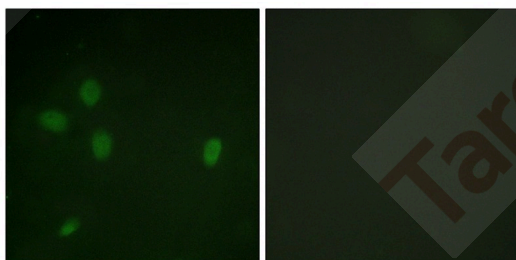
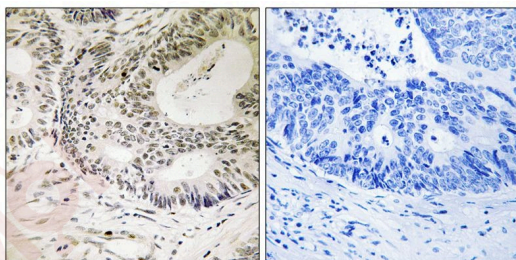
### Product Details

Ig Type:	IgG
Reactivity:	Human,Mouse,Rat
Conjugation:	Unconjugated
Molecular Weight:	Theoretical: 213 kDa.
Purification:	Antibodies were produced by immunizing rabbits with synthetic phosphopeptide and KLH conjugates. Antibodies were purified by affinity-chromatography using epitope-specific phosphopeptide. Non-phospho specific antibodies were removed by chromatography using non-phosphopeptide.

### Applications

#### Verified Activity:

1. Immunohistochemistry analysis of paraffin-embedded human colon carcinoma tissue using 53BP1 (Phospho-Ser25) antibody TMAC-00026. The picture on the right is treated with the synthesized peptide.
2. Immunofluorescence analysis of NIH/3T3 cells, using 53BP1 (Phospho-Ser25) antibody TMAC-00026. The picture on the right is treated with the synthesized peptide.



Application:	IF,IHC
Recommended	IHC: 1:50-100; IF: 1:100-500

### Properties

Stability & Storage:	Store at -20°C or -80°C for 12 months. Avoid repeated freeze-thaw cycles.
Shipping:	Shipping with blue ice.

### Antigen Details

Immunogen:	Peptide sequence around phosphorylation site of serine 25 (E-D-S(p)-Q-P) derived from Human 53BP1
Antigen Species:	human
Uniprot ID:	Q12888
Synonyms:	p-53BP1 (Ser25);p-53BP1 (S25);53BP1 (p-S25);53BP1 (p-Ser25)

---

### Research Background

Plays a key role in the response to DNA damage. May have a role in checkpoint signaling during mitosis. Enhances TP53-mediated transcriptional activation.

**Inhibitor · Natural Compounds · Compound Libraries · Recombinant Proteins**

This product is for Research Use Only· Not for Human or Veterinary or Therapeutic Use

Tel:781-999-4286 E\_mail:info@targetmol.com Address:34 Washington Street,Wellesley Hills,MA 02481