

## Anti-Phospho-4EBP1 (Thr37) Polyclonal Antibody

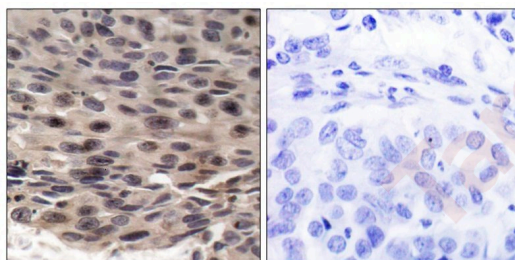
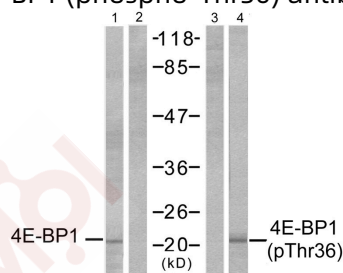
### Product Details

Ig Type:	IgG
Reactivity:	Human,Mouse,Rat
Conjugation:	Unconjugated
Molecular Weight:	Actual: 18 kDa.
Purification:	Antibodies were produced by immunizing rabbits with synthetic phosphopeptide and KLH conjugates. Antibodies were purified by affinity-chromatography using epitope-specific phosphopeptide. Non-phospho specific antibodies were removed by chromatography using non-phosphopeptide.

### Applications

#### Verified Activity:

1. Western blot analysis of extracts from MDA-MB-435 cells, untreated or EGF-treated (200 ng/ml, 30min), using 4E-BP1 (Ab-37) antibody (#21215, Lane 1 and 2) and 4E-BP1 (phospho-Thr37) antibody (TMAC-00021, Lane 3 and 4).
2. Immunohistochemical analysis of paraffin-embedded human breast carcinoma, using 4E-BP1 (phospho-Thr36) antibody (TMAC-00021).



Application:	IHC,WB
Recommended	WB: 1:500-1000; IHC: 1:50-100

### Properties

Stability & Storage:	Store at -20°C or -80°C for 12 months. Avoid repeated freeze-thaw cycles.
Shipping:	Shipping with blue ice.

### Antigen Details

Immunogen: Peptide sequence around phosphorylation site of threonine 37(S-T-T(p)-P-G) derived from Human 4E-BP1

Antigen Species: human

Uniprot ID: Q13541

Synonyms: 4EBP1 (p-T37);p-4EBP1 (Thr37);4EBP1 (p-Thr37);p-4EBP1 (T37)

---

### Research Background

Regulates eIF4E activity by preventing its assembly into the eIF4F complex. Mediates the regulation of protein translation by hormones, growth factors and other stimuli that signal through the MAP kinase and mTORC1 pathways.

**Inhibitor · Natural Compounds · Compound Libraries · Recombinant Proteins**

This product is for Research Use Only · Not for Human or Veterinary or Therapeutic Use

Tel:781-999-4286 E\_mail:info@targetmol.com Address:34 Washington Street,Wellesley Hills,MA 02481