

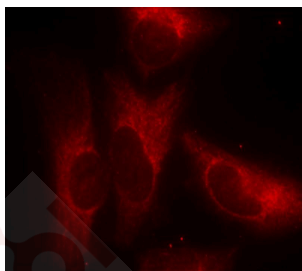
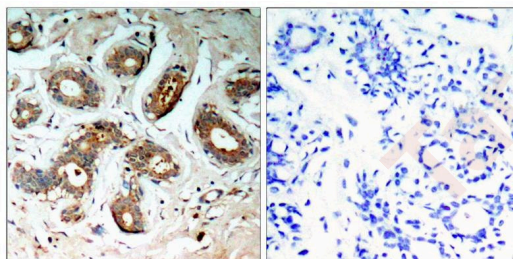
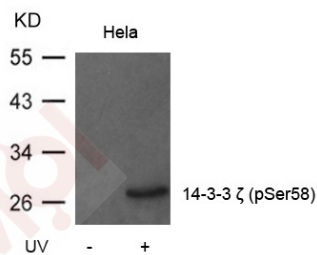
## Anti-Phospho-14-3-3 zeta/delta (Ser58) Polyclonal Antibody

### Product Details

Ig Type:	IgG
Reactivity:	Human,Mouse,Rat
Conjugation:	Unconjugated
Purification:	Antibodies were produced by immunizing rabbits with synthetic phosphopeptide and KLH conjugates. Antibodies were purified by affinity-chromatography using epitope-specific phosphopeptide. Non-phospho specific antibodies were removed by chromatography using non-phosphopeptide.

### Applications

- Verified Activity:
- Western blot analysis of extracts from HeLa cells untreated or treated with UV using 14-3-3z (Phospho-Ser58) Antibody TMAC-00012.
  - Immunohistochemical analysis of paraffin-embedded human breast carcinoma tissue using 14-3-3z(Phospho-Ser58) Antibody TMAC-00012(left) or the same antibody preincubated with blocking peptide(right).
  - Immunofluorescence staining of methanol-fixed HeLa cells using 14-3-3z(Phospho-Ser58) Antibody TMAC-00012.



Application:	IF,IHC,WB
Recommended	WB: 1:500-1000; IHC: 1:50-100; IF: 1:100-200

### Properties

Stability & Storage: Store at 2°C-8°C for 1 month. Store at -20°C or -80°C for 12 months. Avoid repeated freeze-thaw cycles.

Shipping: Shipping with blue ice.

---

### Antigen Details

Immunogen: Peptide sequence around phosphorylation site of serine 58 (R-S-S(p)-W-R) derived from Human 14-3-3 zeta

Antigen Species: human

Uniprot ID: P63104

Synonyms: 14-3-3 zeta/delta (p-S58);p-14-3-3 zeta/delta (Ser58);14-3-3 zeta/delta (p-Ser58);p-14-3-3 zeta/delta (S58)

---

### Research Background

This gene product belongs to the 14-3-3 family of proteins which mediate signal transduction by binding to phosphoserine-containing proteins. This highly conserved protein family is found in both plants and mammals, and this protein is 99% identical to the mouse, rat and sheep orthologs. The encoded protein interacts with IRS1 protein, suggesting a role in regulating insulin sensitivity. Several transcript variants that differ in the 5' UTR but that encode the same protein have been identified for this gene.

**Inhibitor · Natural Compounds · Compound Libraries · Recombinant Proteins**

This product is for Research Use Only · Not for Human or Veterinary or Therapeutic Use

Tel:781-999-4286 E\_mail:info@targetmol.com Address:34 Washington Street,Wellesley Hills,MA 02481