

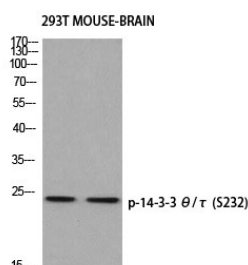
Anti-Phospho-14-3-3 theta/YWHAQ (Ser232) Polyclonal Antibody

Product Details

Ig Type:	IgG
Reactivity:	Human,Mouse,Rat
Conjugation:	Unconjugated
Molecular Weight:	Actual: 28 kDa.
Purification:	The antibody was affinity-purified from rabbit antiserum by affinity-chromatography using epitope-specific immunogen.

Applications

Verified Activity: 1. Western blot analysis of 293T MOUSE-BRAIN using p-14-3-3 θ/τ (S232) antibody.



Application: ELISA,IF,IHC,WB

Recommended WB: 1:500-2000; IHC: 1:100-300; IF: 1:200-1000; ELISA: 1:5000

Properties

Stability & Storage: Store at -20°C or -80°C for 12 months. Avoid repeated freeze-thaw cycles.

Shipping: Shipping with blue ice.

Antigen Details

Immunogen:	A synthesized phosphopeptide: human 14-3-3 θ/τ around the phosphorylation site of S232
Antigen Species:	human
Uniprot ID:	P27348
Synonyms:	p-14-3-3 theta/YWHAQ (S232);14-3-3 theta/YWHAQ (p-S232);14-3-3 theta/YWHAQ (p-Ser232); p-14-3-3 theta/YWHAQ (Ser232)

Inhibitor · Natural Compounds · Compound Libraries · Recombinant Proteins

This product is for Research Use Only. Not for Human or Veterinary or Therapeutic Use

Tel:781-999-4286 E_mail:info@targetmol.com Address:34 Washington Street,Wellesley Hills,MA 02481