

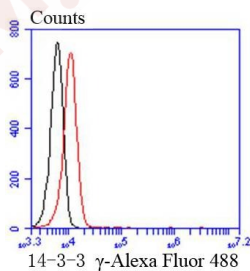
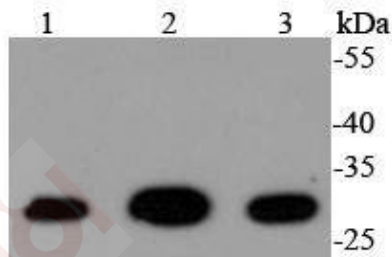
Anti-14-3-3 gamma Antibody (5D580)

Product Details

Ig Type:	IgG
Reactivity:	Human,Mouse,Rat
Conjugation:	Unconjugated
Molecular Weight:	Theoretical: 28 kDa.
Clone:	5D580
Purification:	ProA affinity purified

Applications

- Verified Activity:
- Western blot analysis of 14-3-3 gamma on different lysates using anti-14-3-3 gamma antibody at 1/1,000 dilution. Positive control: Lane 1: 293T, Lane 2: A431 Lane 3: Hela.
 - Flow cytometric analysis of K562 cells with 14-3-3 gamma antibody at 1/50 dilution (red) compared with an unlabelled control (cells without incubation with primary antibody; black). Alexa Fluor 488-conjugated goat anti rabbit IgG was used as the secondary antibody.



Application:	FCM,WB
Recommended	WB: 1:1000-2000; FCM: 1:10-50

Properties

- Stability & Storage: Store at -20°C or -80°C for 12 months. Avoid repeated freeze-thaw cycles.
- Shipping: Shipping with blue ice.

Antigen Details

Immunogen: Recombinant Protein
Uniprot ID: P61981
Synonyms: KCIP1;YWHAG;1433G;Protein kinase C inhibitor protein 1 (KCIP-1)

Research Background

14-3-3 proteins regulate many cellular processes relevant to cancer biology, notably apoptosis, mitogenic signaling and cell-cycle checkpoints. Seven isoforms comprise this family of signaling intermediates, denoted 14-3-3 b, g, e, z, h, q and s. 14-3-3 proteins form dimers that present two binding sites for ligand proteins, thereby bringing together two proteins that may not otherwise associate. These ligands largely share a 14-3-3 consensus binding motif and exhibit serine/threonine phosphorylation. 14-3-3 proteins function in broad regulation of these ligand proteins; by cytoplasmic sequestration, occupation of interaction domains and import/export sequences, prevention of degradation, activation/repression of enzymatic activity, and facilitation of protein modification. Loss of expression contributes to a vast array of pathogenic cellular activities.

Inhibitor · Natural Compounds · Compound Libraries · Recombinant Proteins

This product is for Research Use Only · Not for Human or Veterinary or Therapeutic Use

Tel:781-999-4286 E_mail:info@targetmol.com Address:34 Washington Street,Wellesley Hills,MA 02481