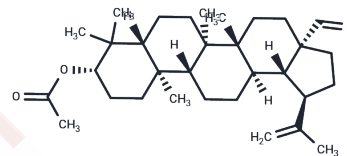


## 3-Acetyl Betulinaldehyde

## Chemical Properties

CAS No. :	27570-21-4
Formula:	C <sub>32</sub> H <sub>50</sub> O <sub>3</sub>
Molecular Weight:	482.749
Storage:	Powder: -20°C for 3 years   In solvent: -80°C for 1 year Actual storage temperature shall be subject to the COA.



## Biological Description

Description	3-Acetyl betulinaldehyde is a triterpene and derivative of the cholesterol biosynthesis inhibitor betulin that has been found in <i>A. japonica</i> . <sup>1</sup> It is an intermediate in the synthesis of 3-acetylbetulinic acid, as well as various lupine and germanicane triterpenes and saponins with anticancer activity. <sup>2</sup>
Targets(IC50)	Others

## Solubility Information

Solubility	Chloroform: 10 mg/mL (20.71 mM), Sonication is recommended. DMF: 1 mg/mL (2.07 mM), Sonication is recommended. ( $< 1$ mg/ml refers to the product slightly soluble or insoluble)
------------	---

## Preparing Stock Solutions

	1mg	5mg	10mg
1 mM	2.0715 mL	10.3573 mL	20.7147 mL
5 mM	0.4143 mL	2.0715 mL	4.1429 mL
10 mM	0.2071 mL	1.0357 mL	2.0715 mL
50 mM	0.0414 mL	0.2071 mL	0.4143 mL

Please select the appropriate solvent to prepare the stock solution, according to the solubility of the product in different solvents. Please use it as soon as possible.

Note: The dilution table applies only to solid products. For liquid products, please calculate the stock solution based on the stated concentration and/or density.

Reference

Tung, N.H., Kwon, H.-J., Kim, J.-H., et al. An anti-influenza component of the bark of *Alnus japonica* Arch. Pharm. Res. 33(3)363-367(2010)

Thibeault, D., Gauthier, C., Legault, J., et al. Synthesis and structure-activity relationship study of cytotoxic germanicane- and lupane-type 3 $\beta$ -O-monodesmosidic saponins starting from betulin Bioorg. Med. Chem. 15(18) 6144-6157(2007)

**Inhibitor · Natural Compounds · Compound Libraries · Recombinant Proteins**

This product is for Research Use Only · Not for Human or Veterinary or Therapeutic Use

Tel: 781-999-4286 E\_mail: info@targetmol.com Address: 34 Washington Street, Wellesley Hills, MA 02481