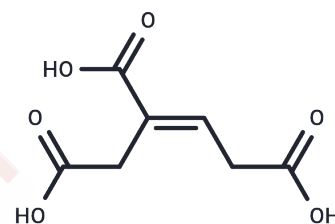


Triglochinic acid

Chemical Properties

CAS No. :	31795-12-7
Formula:	C ₇ H ₈ O ₆
Molecular Weight:	188.13
Storage:	Powder: -20°C for 3 years In solvent: -80°C for 1 year Actual storage temperature shall be subject to the COA.



Biological Description

Description	Triglochinic acid is a natural compound isolated from tubers of <i>Pinellia pedatisecta</i> Schott.
Targets(IC50)	Others

Solubility Information

Solubility	DMSO: 60 mg/mL (318.93 mM), Sonication is recommended. (< 1 mg/ml refers to the product slightly soluble or insoluble)
In vivo Formulation	10% DMSO+40% PEG300+5% Tween 80+45% Saline: 2 mg/mL (10.63 mM), Sonication is recommended. <i>Please add the solvents sequentially, clarifying the solution as much as possible before adding the next one. Dissolve by heating and/or sonication if necessary. Working solution is recommended to be prepared and used immediately. The formulation provided above is for reference purposes only. In vivo formulations may vary and should be modified based on specific experimental conditions.</i>

Preparing Stock Solutions

	1mg	5mg	10mg
1 mM	5.3155 mL	26.5774 mL	53.1547 mL
5 mM	1.0631 mL	5.3155 mL	10.6309 mL
10 mM	0.5315 mL	2.6577 mL	5.3155 mL
50 mM	0.1063 mL	0.5315 mL	1.0631 mL

Please select the appropriate solvent to prepare the stock solution, according to the solubility of the product in different solvents. Please use it as soon as possible.

Note: The dilution table applies only to solid products. For liquid products, please calculate the stock solution based on the stated concentration and/or density.

Reference

Yong Jing, et al. Study on the identification of Pinelliae rhizoma and Pinelliae pedatisectae rhizoma based on the characteristic component triglochonic acid. RSC Advances. 2019 (21).

Inhibitor · Natural Compounds · Compound Libraries · Recombinant Proteins

This product is for Research Use Only · Not for Human or Veterinary or Therapeutic Use

Tel:781-999-4286 E_mail:info@targetmol.com Address:34 Washington Street,Wellesley Hills,MA 02481