

CM398

Chemical Properties

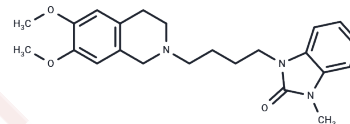
CAS No. : 1121931-70-1

Formula: C₂₃H₂₉N₃O₃

Molecular Weight: 395.49

Storage: Powder: -20°C for 3 years | In solvent: -80°C for 1 year

Actual storage temperature shall be subject to the COA.



Biological Description

Description	CM398 is an orally active chemical compound that acts as a highly selective ligand for the sigma-2 receptor ($K_i = 0.43$ nM), demonstrating a significant ratio of selectivity between sigma-1 and sigma-2 receptors (1000-fold). Moreover, CM398 exhibits notable affinity towards dopamine ($K_i = 32.90$ nM) and serotonin transporters ($K_i = 244.2$ nM). In addition, CM398 has shown promising efficacy as an anti-inflammatory analgesic in a mouse model of inflammatory pain induced by formalin [1].
Targets(IC50)	Others, Sigma receptor

Preparing Stock Solutions

	1mg	5mg	10mg
1 mM	2.5285 mL	12.6425 mL	25.2851 mL
5 mM	0.5057 mL	2.5285 mL	5.057 mL
10 mM	0.2529 mL	1.2643 mL	2.5285 mL
50 mM	0.0506 mL	0.2529 mL	0.5057 mL

Please select the appropriate solvent to prepare the stock solution, according to the solubility of the product in different solvents. Please use it as soon as possible.

Note: The dilution table applies only to solid products. For liquid products, please calculate the stock solution based on the stated concentration and/or density.

Inhibitor · Natural Compounds · Compound Libraries · Recombinant Proteins

This product is for Research Use Only · Not for Human or Veterinary or Therapeutic Use

Tel: 781-999-4286

E_mail: info@targetmol.com

Address: 34 Washington Street, Wellesley Hills, MA 02481