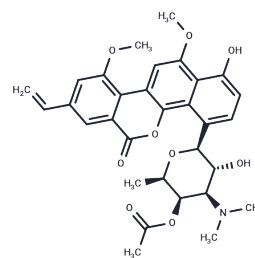


Ravidomycin

Chemical Properties

CAS No. :	74622-75-6
Formula:	C ₃₁ H ₃₃ N ₁ O ₉
Molecular Weight:	563.59
Storage:	Powder: -20°C for 3 years In solvent: -80°C for 1 year Actual storage temperature shall be subject to the COA.



Biological Description

Description	Ravidomycin is an antitumor antibiotic. It shows effective anticancer activities against various cancer cell lines in the presence of visible light.
Targets(IC50)	Others

Preparing Stock Solutions

	1mg	5mg	10mg
1 mM	1.7743 mL	8.8717 mL	17.7434 mL
5 mM	0.3549 mL	1.7743 mL	3.5487 mL
10 mM	0.1774 mL	0.8872 mL	1.7743 mL
50 mM	0.0355 mL	0.1774 mL	0.3549 mL

Please select the appropriate solvent to prepare the stock solution, according to the solubility of the product in different solvents. Please use it as soon as possible.

Note: The dilution table applies only to solid products. For liquid products, please calculate the stock solution based on the stated concentration and/or density.

Reference

- Kharel MK, Nybo SE, Shepherd MD, Rohr J. Cloning and characterization of the ravidomycin and chrysomycin biosynthetic gene clusters. *ChemBiochem*. 2010 Mar 1;11(4):523-32. doi: 10.1002/cbic.200900673. PubMed PMID: 20140934; PubMed Central PMCID: PMC2879346.
- Sehgal SN, Czerkawski H, Kudelski A, Pandev K, Saucier R, Vézina C. Ravidomycin (AY-25,545), a new antitumor antibiotic. *J Antibiot (Tokyo)*. 1983 Apr;36(4):355-61. PubMed PMID: 6853365.
- Rakhit S, Eng C, Baker H, Singh K. Chemical modification of ravidomycin and evaluation of biological activities of its derivatives. *J Antibiot (Tokyo)*. 1983 Nov;36(11):1490-4. PubMed PMID: 6654759.
- Singh K. Studies on the mechanism of action of ravidomycin (AY-25,545). *J Antibiot (Tokyo)*. 1984 Jan;37(1):71-3. PubMed PMID: 6421790.

Inhibitor · Natural Compounds · Compound Libraries · Recombinant Proteins

This product is for Research Use Only · Not for Human or Veterinary or Therapeutic Use

Tel:781-999-4286 E_mail:info@targetmol.com Address:34 Washington Street,Wellesley Hills,MA 02481