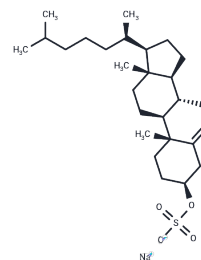


## Cholesteryl sulfate sodium

### Chemical Properties

CAS No. :	2864-50-8
Formula:	C <sub>27</sub> H <sub>45</sub> NaO <sub>4</sub> S
Molecular Weight:	488.7
Storage:	Powder: -20°C for 3 years   In solvent: -80°C for 1 year Actual storage temperature shall be subject to the COA.



### Biological Description

Description	Cholesteryl sulfate sodium (Sodium Cholesteryl Sulfate) is a sterol sulfate in human plasma. Cholesteryl sulfate sodium is a component of cell membrane and has a regulatory function. Cholesteryl sulfate sodium also activates multiple protein kinase C (PKC) iso-enzymes, especially the $\epsilon$ , $\eta$ and $\zeta$ isoforms.
Targets(IC50)	Endogenous Metabolite, PKC

### Solubility Information

Solubility	DMSO: 1.29 mg/mL (2.64 mM), Sonication is recommended. ( $< 1$ mg/ml refers to the product slightly soluble or insoluble)
In vivo Formulation	2% DMSO+50% PEG300+5% Tween-80+43% Saline: 2.5 mg/mL (5.12 mM), Solution. <i>Please add the solvents sequentially, clarifying the solution as much as possible before adding the next one. Dissolve by heating and/or sonication if necessary. Working solution is recommended to be prepared and used immediately. The formulation provided above is for reference purposes only. In vivo formulations may vary and should be modified based on specific experimental conditions.</i>

### Preparing Stock Solutions

	1mg	5mg	10mg
1 mM	2.0462 mL	10.2312 mL	20.4625 mL
5 mM	0.4092 mL	2.0462 mL	4.0925 mL
10 mM	0.2046 mL	1.0231 mL	2.0462 mL
50 mM	0.0409 mL	0.2046 mL	0.4092 mL

Please select the appropriate solvent to prepare the stock solution, according to the solubility of the product in different solvents. Please use it as soon as possible.

Note: The dilution table applies only to solid products. For liquid products, please calculate the stock solution based on the stated concentration and/or density.

### Reference

Strott CA, et al. Cholesterol sulfate in human physiology: what's it all about? J Lipid Res. 2003 Jul;44(7):1268-78.

Chen J, Zhou X, Fu L, et al. Natural Product-Based Screening for Lead Compounds Targeting SARS CoV-2 Mpro[J]. Pharmaceuticals, 2023, 16(5): 767..Pharmaceuticals.2023, 16(5): 767.

Ikuta T, et al. Cholesterol sulfate, a novel activator for the eta isoform of protein kinase C. Cell Growth Differ. 1994 Sep;5(9):943-7.

**Inhibitor · Natural Compounds · Compound Libraries · Recombinant Proteins**

This product is for Research Use Only· Not for Human or Veterinary or Therapeutic Use

Tel:781-999-4286 E\_mail:info@targetmol.com Address:34 Washington Street,Wellesley Hills,MA 02481