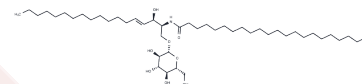


C22 Glucosylceramide (d18:1/22:0)

Chemical Properties

CAS No. :	119242-44-3
Formula:	C46H89NO8
Molecular Weight:	784.2
Storage:	Powder: -20°C for 3 years In solvent: -80°C for 1 year Actual storage temperature shall be subject to the COA.



Biological Description

Description	C22 Glucosylceramide (d18:1/22:0) is an endogenous glucosylceramide. Glucosylceramides are major constituents of skin lipid membranes where they play a role in maintaining the water permeability barrier. They are precursors in the synthesis of lactosylceramide, as well as oligoglycolipids and gangliosides. Phospholipase A2 (PLA2) type X11A knockdown increases C22 glucosylceramide (d18:1/22:0) expression in rat brain. It is also increased in the brain, but not the liver or spinal cord, of mice fed a methionine-restricted diet. In human athletes, plasma levels of C22 glucosylceramide (d18:1/22:0) increase during exercise and return to basal levels during recovery. This product contains C22 glucosylceramide (d18:1/22:0) isolated from bovine buttermilk.
Targets(IC50)	Others

Solubility Information

Solubility	Chloroform: Soluble (< 1 mg/ml refers to the product slightly soluble or insoluble)
------------	--

Preparing Stock Solutions

	1mg	5mg	10mg
1 mM	1.2752 mL	6.3759 mL	12.7518 mL
5 mM	0.255 mL	1.2752 mL	2.5504 mL
10 mM	0.1275 mL	0.6376 mL	1.2752 mL
50 mM	0.0255 mL	0.1275 mL	0.255 mL

Please select the appropriate solvent to prepare the stock solution, according to the solubility of the product in different solvents. Please use it as soon as possible.

Note: The dilution table applies only to solid products. For liquid products, please calculate the stock solution based on the stated concentration and/or density.

Inhibitor · Natural Compounds · Compound Libraries · Recombinant Proteins

This product is for Research Use Only · Not for Human or Veterinary or Therapeutic Use

Tel:781-999-4286 E_mail:info@targetmol.com Address:34 Washington Street,Wellesley Hills,MA 02481