

Anti-YKL-40/CHI3L1 Polyclonal Antibody

Product Details

Ig Type: IgG
Reactivity: Human (predicted:Mouse,Rat)
Molecular Weight: Theoretical: 42 kDa. Actual: 42 kDa.
Purification: Protein A purified

Applications

1. Sample: HepG2 (Human) Cell Lysate at 30 µg Recombinant human CHI3L1 Protein at 2 µg
Primary: Anti-CHI3L1 (TMAB-00425) at 1/1000 dilution
Secondary: IRDye800CW Goat Anti-Rabbit IgG at 1/20000 dilution
Predicted band size: 42 kDa
Observed band size: 42 kDa

2. Cell: HepG2

Concentration:1:100

Host/Isotype: Rabbit/IgG

Verified Activity: Flow cytometric analysis of Rabbit IgG isotype control (Cat#: TMAB-00425) on HepG2 (green) compared with control in the absence of primary antibody (blue) followed by Alexa Fluor 488-conjugated goat anti-rabbit IgG (H+L) secondary antibody.

3. Sample:

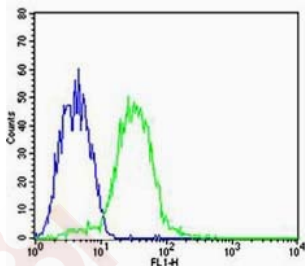
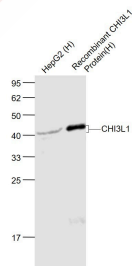
HepG2 (Human) Cell Lysate at 30 µg

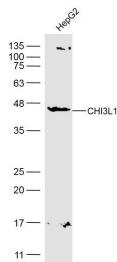
Primary: Anti-CHI3L1 (TMAB-00425) at 1/500 dilution

Secondary: IRDye800CW Goat Anti-Rabbit IgG at 1/20000 dilution

Predicted band size: 42 kDa

Observed band size: 42 kDa





Application: FCM,WB

Recommended WB: 1:500-2000; FCM: 1µg/Test

Properties

Stability & Storage: Store at -20°C or -80°C for 12 months. Avoid repeated freeze-thaw cycles.

Shipping: Shipping with blue ice.

Antigen Details

Immunogen: KLH conjugated synthetic peptide: human CHI3L1

Antigen Species: Human

Gene ID: 1116

Uniprot ID: P36222

Synonyms: AW208766;gp39;Brp39;chitinase 3 like 1

Biology Area: Other ECM Proteins

Research Background

Chitinases catalyze the hydrolysis of chitin, which is an abundant glycopolymer found in insect exoskeletons and fungal cell walls. The glycoside hydrolase 18 family of chitinases includes eight human family members. This gene encodes a glycoprotein member of the glycosyl hydrolase 18 family. The protein lacks chitinase activity and is secreted by activated macrophages, chondrocytes, neutrophils and synovial cells. The protein is thought to play a role in the process of inflammation and tissue remodeling. [provided by RefSeq, Sep 2009]

Inhibitor · Natural Compounds · Compound Libraries · Recombinant Proteins

This product is for Research Use Only · Not for Human or Veterinary or Therapeutic Use

Tel:781-999-4286 E_mail:info@targetmol.com Address:34 Washington Street,Wellesley Hills,MA 02481