

Anti-ZDHHC6 Polyclonal Antibody

Product Details

Ig Type:	IgG
Reactivity:	Human,Mouse,Rat (predicted:Pig,Horse)
Molecular Weight:	Theoretical: 48 kDa. Actual: 48 kDa.
Purification:	Protein A purified

Applications

1. Sample:

Kidney (Mouse) Lysate at 40 µg

Primary: Anti-ZDHHC6 (TMAB-01994) at 1/300 dilution

Secondary: IRDye800CW Goat Anti-Rabbit IgG at 1/20000 dilution

Predicted band size: 48 kDa

Observed band size: 48 kDa

2. Sample:

Lane 1: Mouse Pancreas tissue lysates

Lane 2: Mouse Cerebrum tissue lysates

Lane 3: Mouse Testis tissue lysates

Lane 4: Mouse Raw264.7 cell lysates

Lane 5: Mouse NIH/3T3 cell lysates

Lane 6: Rat Kidney tissue lysates

Lane 7: Rat Cerebrum tissue lysates

Lane 8: Rat Testis tissue lysates

Lane 9: Human HL-60 cell lysates

Primary: Anti-ZDHHC6 (TMAB-01994) at 1/1000 dilution

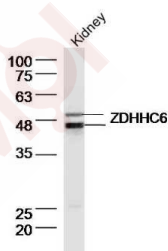
Secondary: IRDye800CW Goat Anti-Rabbit IgG at 1/20000 dilution

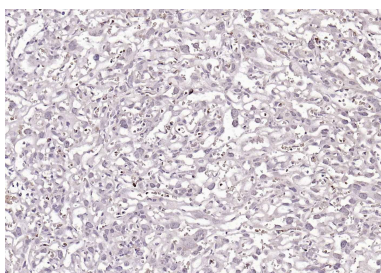
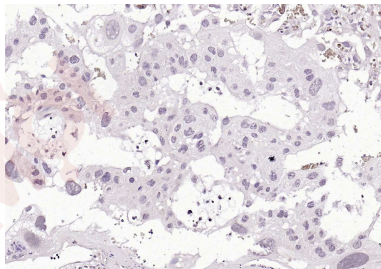
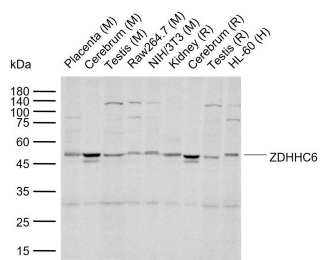
Predicted band size: 48 kDa

Observed band size: 50 kDa

3. Paraformaldehyde-fixed, paraffin embedded (rat placenta); Antigen retrieval by boiling in sodium citrate buffer (pH6.0) for 15 min; Block endogenous peroxidase by 3% hydrogen peroxide for 20 min; Blocking buffer (normal goat serum) at 37°C for 30 min; Incubation with (ZDHHC6) Polyclonal Antibody, Unconjugated (TMAB-01994) at 1:200 overnight at 4°C, followed by operating according to SP Kit (Rabbit) instructions and DAB staining.

4. Paraformaldehyde-fixed, paraffin embedded (mouse placenta); Antigen retrieval by boiling in sodium citrate buffer (pH6.0) for 15 min; Block endogenous peroxidase by 3% hydrogen peroxide for 20 min; Blocking buffer (normal goat serum) at 37°C for 30 min; Incubation with (ZDHHC6) Polyclonal Antibody, Unconjugated (TMAB-01994) at 1:200 overnight at 4°C, followed by operating according to SP Kit (Rabbit) instructions and DAB staining.





Application: IF,IHC-Fr,IHC-P,WB

Recommended WB: 1:500-2000; IHC-P: 1:100-500; IHC-Fr: 1:100-500; IF: 1:100-500

Properties

Stability & Storage: Store at -20°C or -80°C for 12 months. Avoid repeated freeze-thaw cycles.

Shipping: Shipping with blue ice.

Antigen Details

Immunogen: KLH conjugated synthetic peptide: human ZDHHC6

Antigen Species: Human

Gene ID: 64429

Uniprot ID: Q9H6R6

Synonyms: Zinc finger DHHC domain-containing protein 6; Zinc finger protein 376; ZDHC6; Probable palmitoyltransferase ZDHHC6; Zdhhc6; ZNF376; Transmembrane protein H4; FLJ21952; DHHC-6

Inhibitor · Natural Compounds · Compound Libraries · Recombinant Proteins

This product is for Research Use Only · Not for Human or Veterinary or Therapeutic Use

Tel: 781-999-4286 E_mail: info@targetmol.com Address: 34 Washington Street, Wellesley Hills, MA 02481