

Anti-WEE1 Polyclonal Antibody

Product Details

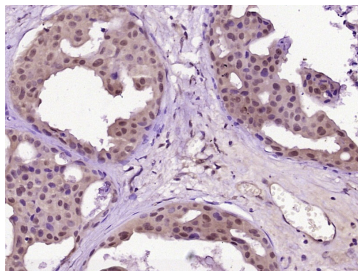
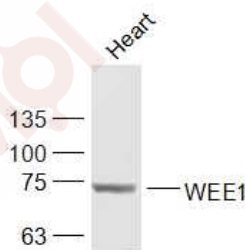
Ig Type:	IgG
Reactivity:	Human,Rat (predicted:Mouse)
Molecular Weight:	Theoretical: 72 kDa. Actual: 72 kDa.
Purification:	Protein A purified

Applications

1. Sample:
Heart (Rat) Lysate at 40 µg
Primary: Anti-WEE1 (TMAB-01978) at 1/1000 dilution
Secondary: IRDye800CW Goat Anti-Rabbit IgG at 1/20000 dilution
Predicted band size: 72 kDa
Observed band size: 72 kDa

Verified Activity:

2. Paraformaldehyde-fixed, paraffin embedded (Human breast carcinoma); Antigen retrieval by boiling in sodium citrate buffer (pH6.0) for 15 min; Block endogenous peroxidase by 3% hydrogen peroxide for 20 min; Blocking buffer (normal goat serum) at 37°C for 30 min; Antibody incubation with (WEE1) Polyclonal Antibody, Unconjugated (TMAB-01978) at 1:400 overnight at 4°C, followed by operating according to SP Kit (Rabbit) instructions and DAB staining.



Application:	IF,IHC-Fr,IHC-P,WB
Recommended	WB: 1:500-2000; IHC-P: 1:100-500; IHC-Fr: 1:100-500; IF: 1:100-500

Properties

Stability & Storage: Store at -20°C or -80°C for 12 months. Avoid repeated freeze-thaw cycles.

Shipping: Shipping with blue ice.

Antigen Details

Immunogen: KLH conjugated synthetic peptide: human WEE1

Antigen Species: Human

Gene ID: 7465

Uniprot ID: P30291

Synonyms: Wee1+S. pombe homolog;WEE1 homolog S. pombe;Wee1+homolog;Wee1 tyrosine kinase; WEE1A;WEE1 tyrosine kinase isoform 1;WEE-1;MGC105683;Wee1 like protein kinase;Wee1A kinase;WEE1 hu;DKFZp686I18166;Wee1 homolog;EC 2.7.10.2;FLJ16446

Biology Area: Cdk Regulators,Cdk Regulators

Research Background

This gene encodes a nuclear protein, which is a tyrosine kinase belonging to the Ser/Thr family of protein kinases. This protein catalyzes the inhibitory tyrosine phosphorylation of CDC2/cyclin B kinase, and appears to coordinate the transition between DNA replication and mitosis by protecting the nucleus from cytoplasmically activated CDC2 kinase.

Inhibitor · Natural Compounds · Compound Libraries · Recombinant Proteins

This product is for Research Use Only · Not for Human or Veterinary or Therapeutic Use

Tel:781-999-4286 E_mail:info@targetmol.com Address:34 Washington Street,Wellesley Hills,MA 02481