

Anti-WDR26 Polyclonal Antibody

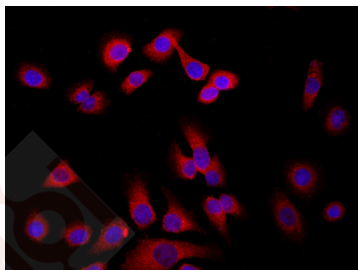
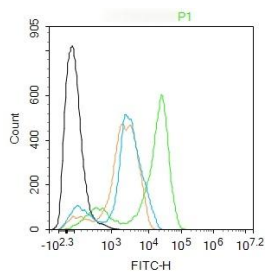
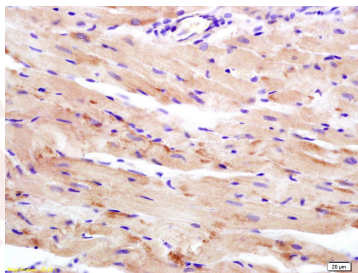
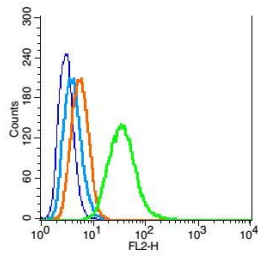
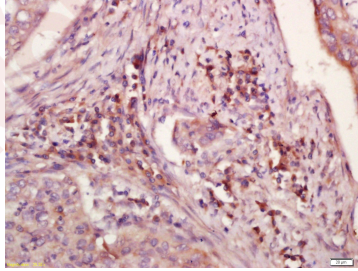
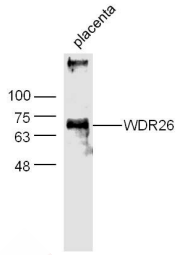
Product Details

Ig Type:	IgG
Reactivity:	Human,Mouse,Rat (predicted:Chicken,Dog,Cow,Horse)
Molecular Weight:	Theoretical: 72 kDa. Actual: 70 kDa.
Purification:	Protein A purified

Applications

- Sample:**
Placenta (Mouse) Lysate at 40 µg
Primary: Anti-WDR26 (TMAB-01977) at 1/300 dilution
Secondary: IRDye800CW Goat Anti-Rabbit IgG at 1/20000 dilution
Predicted band size: 72 kDa
Observed band size: 70 kDa
 - Tissue/cell:** human laryngocarcinoma; 4% Paraformaldehyde-fixed and paraffin-embedded;
Antigen retrieval: citrate buffer (0.01M, pH6.0), Boiling bathing for 15 min; Block endogenous peroxidase by 3% Hydrogen peroxide for 30 min; Blocking buffer (normal goat serum) at 37°C for 20 min;
Incubation: Anti-WDR26 Polyclonal Antibody, Unconjugated (TMAB-01977) 1:200, overnight at 4°C, followed by conjugation to the secondary antibody and DAb staining.
 - Blank control:** RSC96 (blue), the cells were fixed with 2% paraformaldehyde (10 min) and then permeabilized with ice-cold 90% methanol for 30 min on ice.
Isotype Control Antibody: Rabbit Igg (orange);
Secondary Antibody: Goat anti-rabbit IgG-Pe (white blue),
Dilution: 1:200 in 1 X PBS containing 0.5% BSA;
Primary Antibody Dilution: 1 µg in 100 µL 1X PBS containing 0.5% BSA (green).
 - Verified Activity:**
Tissue/cell: rat heart tissue; 4% Paraformaldehyde-fixed and paraffin-embedded;
Antigen retrieval: citrate buffer (0.01M, pH6.0), Boiling bathing for 15 min; Block endogenous peroxidase by 3% Hydrogen peroxide for 30 min; Blocking buffer (normal goat serum) at 37°C for 20 min;
Incubation: Anti-WDR26 Polyclonal Antibody, Unconjugated (TMAB-01977) 1:200, overnight at 4°C, followed by conjugation to the secondary antibody and DAb staining.
 - Blank control:** THP-1. Primary Antibody (green line): Rabbit Anti-WDR26 antibody (TMAB-01977)
Dilution: 1 µg/Test;
Secondary Antibody: Goat anti-rabbit IgG-FITC
Dilution: 0.5 µg/Test.
- Protocol**
The cells were fixed with 4% PFA (10 min at room temperature) and then permeabilized with 90% ice-cold methanol for 20 min at -20°C. The cells were then incubated in 5% BSA to block non-specific protein-protein interactions for 30 min at room temperature. Cells stained with Primary Antibody for 30 min at room temperature. The secondary antibody used for 40 min at room temperature.- Tissue/cell:** MCF7; 4% Paraformaldehyde-fixed; Triton X-100 at room temperature for 20 min; Blocking buffer (normal goat serum) at 37°C for 20 min; Antibody incubation with (WDR26) Polyclonal Antibody, Unconjugated (TMAB-01977) 1:200, 90 minutes at 37°C; followed by a

conjugated Goat Anti-Rabbit IgG antibody at 37°C for 90 minutes, DAPI (blue) was used to stain the cell nucleus.



Application: FCM, ICC/IF, IHC-Fr, IHC-P, WB

Recommended FCM=1 µg/test; ICC/IF=1:100-500; IF=1:100-500; IHC-Fr=1:100-500; IHC-P=1:100-500; WB=1:500-2000

Properties

Stability & Storage: Store at -20°C or -80°C for 12 months. Avoid repeated freeze-thaw cycles.

Shipping: Shipping with blue ice.

Antigen Details

Immunogen: KLH conjugated synthetic peptide: human WDR26

Antigen Species: Human

Gene ID: 80232

Uniprot ID: Q9H7D7

Synonyms: FLJ21016;WD repeat domain 26;MIP2;myocardial ischemic preconditioning upregulated protein 2;CDW2;Myocardial ischemic preconditioning up regulated protein 2;PRO0852;WDR26;WD repeat-containing protein 26;CUL4 and DDB1 associated WDR protein 2

Biology Area: Oxidative Stress,Oxidative stress,MAPK Pathway

Research Background

This gene encodes a member of the WD repeat protein family. WD repeats are minimally conserved regions of approximately 40 amino acids typically bracketed by gly-his and trp-asp (GH-WD), which may facilitate formation of heterotrimeric or multiprotein complexes. Members of this family are involved in a variety of cellular processes, including cell cycle progression, signal transduction, apoptosis, and gene regulation. Two transcript variants encoding two different isoforms have been found for this gene. [provided by RefSeq].

Inhibitor · Natural Compounds · Compound Libraries · Recombinant Proteins

This product is for Research Use Only · Not for Human or Veterinary or Therapeutic Use

Tel:781-999-4286 E_mail:info@targetmol.com Address:34 Washington Street,Wellesley Hills,MA 02481