

Vinculin Loading Control Antibody (5P889)

Product Details

Ig Type:	IgG
Reactivity:	Human,Mouse,Rat
Molecular Weight:	Theoretical: 124 kDa. Actual: 125 kDa.
Clone:	5P889
Purification:	Protein A purified

Applications

1. Sample:

Lane 1: Mouse Testis tissue lysates

Lane 2: Human HeLa cell lysates

Lane 3: Human U251 cell lysates

Lane 4: Human K562 cell lysates

Lane 5: Human HUVEC cell lysates

Primary: Anti-Vinculin (Loading Control) (TMAB-01968) at 1/1000 dilution

Secondary: IRDye800CW Goat Anti-Rabbit IgG at 1/20000 dilution

Predicted band size: 124 kDa

Observed band size: 135 kDa

2. Paraformaldehyde-fixed, paraffin embedded Mouse Colon; Antigen retrieval by boiling in sodium citrate buffer (pH6.0) for 15 min; Antibody incubation with Vinculin Monoclonal Antibody, Unconjugated (TMAB-01968) at 1:200 overnight at 4°C, followed by conjugation to the secondary antibody and DAB staining.

3. Paraformaldehyde-fixed, paraffin embedded Rat Colon; Antigen retrieval by boiling in sodium citrate buffer (pH6.0) for 15 min; Antibody incubation with Vinculin Monoclonal Antibody, Unconjugated (TMAB-01968) at 1:200 overnight at 4°C, followed by conjugation to the secondary antibody and DAB staining.

4. Paraformaldehyde-fixed, paraffin embedded Human Colon; Antigen retrieval by boiling in sodium citrate buffer (pH6.0) for 15 min; Antibody incubation with Vinculin Monoclonal Antibody, Unconjugated (TMAB-01968) at 1:200 overnight at 4°C, followed by conjugation to the secondary antibody and DAB staining.

5. Paraformaldehyde-fixed, paraffin embedded Human Colon Cancer; Antigen retrieval by boiling in sodium citrate buffer (pH6.0) for 15 min; Antibody incubation with Vinculin Monoclonal Antibody, Unconjugated (TMAB-01968) at 1:200 overnight at 4°C, followed by conjugation to the secondary antibody and DAB staining.

6. Paraformaldehyde-fixed, paraffin embedded Mouse Stomach; Antigen retrieval by boiling in sodium citrate buffer (pH6.0) for 15 min; Antibody incubation with Vinculin Monoclonal Antibody, Unconjugated (TMAB-01968) at 1:200 overnight at 4°C, followed by conjugation to the secondary antibody and DAB staining.

7. Paraformaldehyde-fixed, paraffin embedded Rat Stomach; Antigen retrieval by boiling in sodium citrate buffer (pH6.0) for 15 min; Antibody incubation with Vinculin Monoclonal Antibody, Unconjugated (TMAB-01968) at 1:200 overnight at 4°C, followed by conjugation to the secondary antibody and DAB staining.

8. Paraformaldehyde-fixed, paraffin embedded Human Stomach; Antigen retrieval by boiling in sodium citrate buffer (pH6.0) for 15 min; Antibody incubation with Vinculin Monoclonal

Verified Activity:

Antibody, Unconjugated (TMAB-01968) at 1:200 overnight at 4°C, followed by conjugation to the secondary antibody and DAB staining.

9. Paraformaldehyde-fixed, paraffin embedded Mouse Heart; Antigen retrieval by boiling in sodium citrate buffer (pH6.0) for 15 min; Antibody incubation with Vinculin Monoclonal Antibody, Unconjugated (TMAB-01968) at 1:200 overnight at 4°C, followed by conjugation to the secondary antibody and DAB staining.

10. Paraformaldehyde-fixed, paraffin embedded Rat Heart; Antigen retrieval by boiling in sodium citrate buffer (pH6.0) for 15 min; Antibody incubation with Vinculin Monoclonal Antibody, Unconjugated (TMAB-01968) at 1:200 overnight at 4°C, followed by conjugation to the secondary antibody and DAB staining.

11. Paraformaldehyde-fixed, paraffin embedded Rat Testicles; Antigen retrieval by boiling in sodium citrate buffer (pH6.0) for 15 min; Antibody incubation with Vinculin Monoclonal Antibody, Unconjugated (TMAB-01968) at 1:200 overnight at 4°C, followed by conjugation to the secondary antibody and DAB staining.

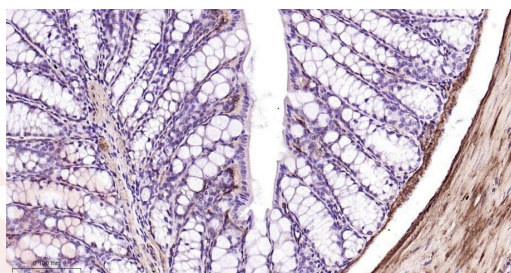
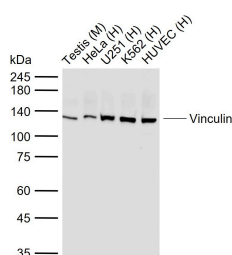
12. Paraformaldehyde-fixed, paraffin embedded Human Lung Cancer; Antigen retrieval by boiling in sodium citrate buffer (pH6.0) for 15 min; Antibody incubation with Vinculin Monoclonal Antibody, Unconjugated (TMAB-01968) at 1:200 overnight at 4°C, followed by conjugation to the secondary antibody and DAB staining.

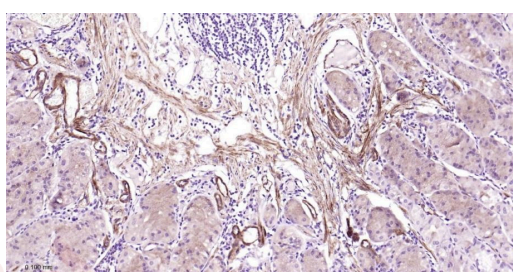
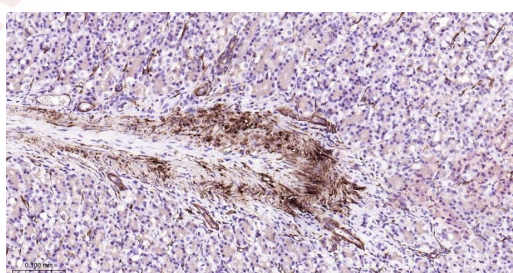
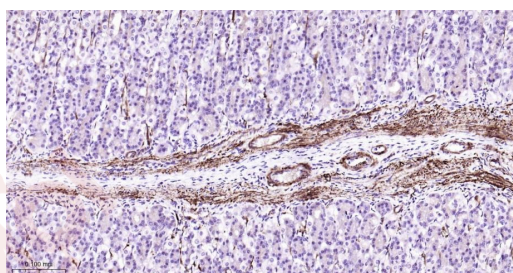
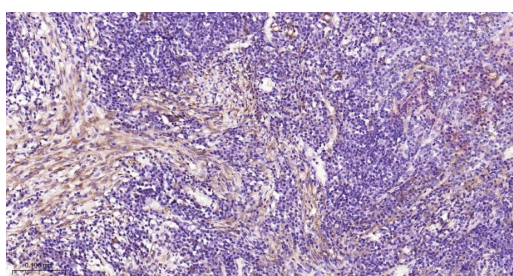
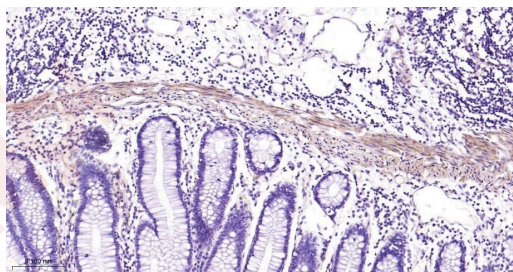
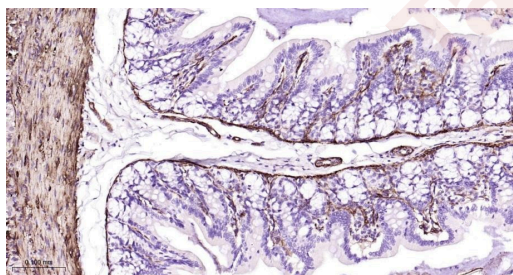
13. Paraformaldehyde-fixed, paraffin embedded Human Prostate Cancer; Antigen retrieval by boiling in sodium citrate buffer (pH6.0) for 15 min; Antibody incubation with Vinculin Monoclonal Antibody, Unconjugated (TMAB-01968) at 1:200 overnight at 4°C, followed by conjugation to the secondary antibody and DAB staining.

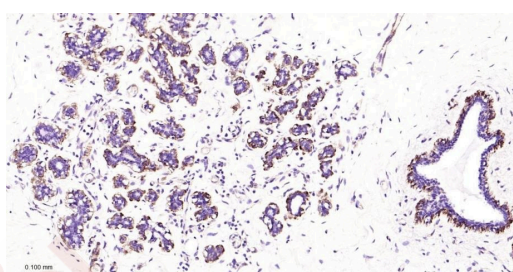
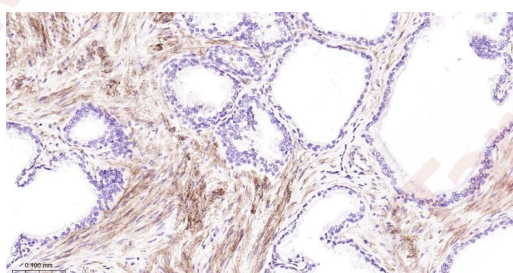
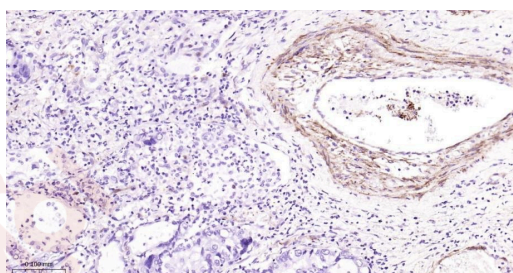
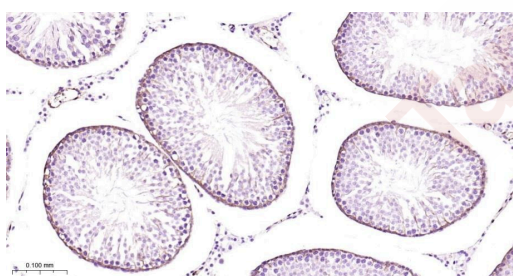
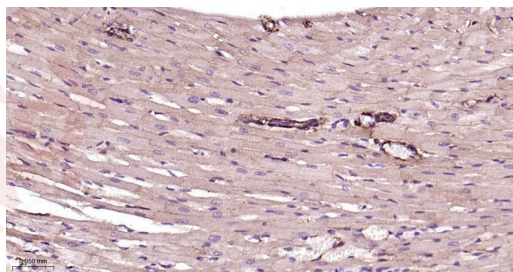
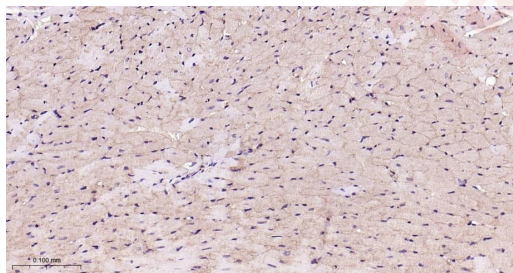
14. Paraformaldehyde-fixed, paraffin embedded Human Breast; Antigen retrieval by boiling in sodium citrate buffer (pH6.0) for 15 min; Antibody incubation with Vinculin Monoclonal Antibody, Unconjugated (TMAB-01968) at 1:200 overnight at 4°C, followed by conjugation to the secondary antibody and DAB staining.

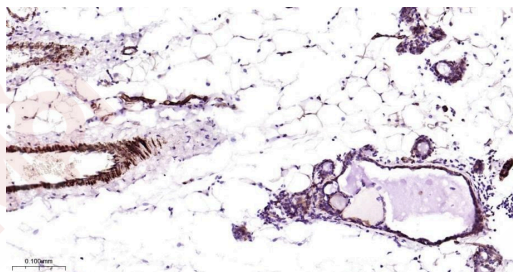
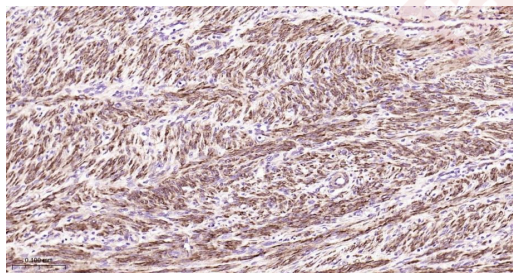
15. Paraformaldehyde-fixed, paraffin embedded Human Endometrium; Antigen retrieval by boiling in sodium citrate buffer (pH6.0) for 15 min; Antibody incubation with Vinculin Monoclonal Antibody, Unconjugated (TMAB-01968) at 1:200 overnight at 4°C, followed by conjugation to the secondary antibody and DAB staining.

16. Paraformaldehyde-fixed, paraffin embedded Mouse Breast; Antigen retrieval by boiling in sodium citrate buffer (pH6.0) for 15 min; Antibody incubation with Vinculin Monoclonal Antibody, Unconjugated (TMAB-01968) at 1:200 overnight at 4°C, followed by conjugation to the secondary antibody and DAB staining.









Application: IF,IHC-Fr,IHC-P,WB

Recommended IF=1:500-2000; IHC-Fr=1:500-2000; IHC-P=1:500-2000; WB=1:1000-2000

Properties

Stability & Storage: Store at -20°C or -80°C for 12 months. Avoid repeated freeze-thaw cycles.

Shipping: Shipping with blue ice.

Antigen Details

Immunogen: Recombinant Protein: Human Vinculin

Antigen Species: Human

Gene ID: 7414

Uniprot ID: P18206

Synonyms: CMD1W;MV;HEL114;CMH15;MVCL;vinculin

Biology Area: Cardiac arrhythmias,Actins,Actin Binding Proteins

Research Background

Vinculin is a cytoskeletal protein associated with cell-cell and cell-matrix junctions, where it is thought to function as one of several interacting proteins involved in anchoring F-actin to the membrane. Defects in VCL are the cause of cardiomyopathy dilated type 1W. Dilated cardiomyopathy is a disorder characterized by ventricular dilation and impaired systolic function, resulting in congestive heart failure and arrhythmia. Multiple alternatively spliced transcript variants have been found for this gene, but the biological validity of some variants has not been determined. [provided by RefSeq, Jul 2008]

Inhibitor · Natural Compounds · Compound Libraries · Recombinant Proteins

This product is for Research Use Only · Not for Human or Veterinary or Therapeutic Use

Tel:781-999-4286 E_mail:info@targetmol.com Address:34 Washington Street,Wellesley Hills,MA 02481