

Anti-VGLUT1/BNP1 Polyclonal Antibody

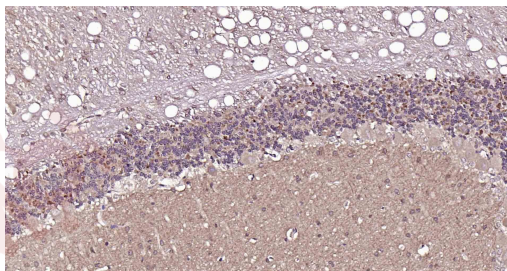
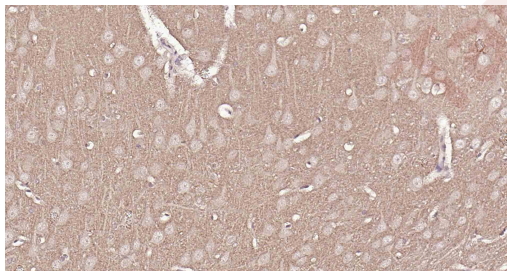
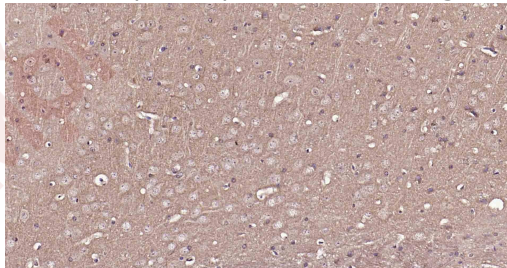
Product Details

Ig Type:	IgG
Reactivity:	Mouse,Rat (predicted:Human)
Molecular Weight:	Theoretical: 62 kDa.
Purification:	Protein A purified

Applications

Verified Activity:

1. Paraformaldehyde-fixed, paraffin embedded Mouse Cerebrum; Antigen retrieval by boiling in sodium citrate buffer (pH6.0) for 15 min; Antibody incubation with VGLUT1/BNP1 Polyclonal Antibody, Unconjugated (TMAB-01962) at 1:100 overnight at 4°C, followed by conjugation to the SP Kit (Rabbit) and DAB staining.
2. Paraformaldehyde-fixed, paraffin embedded Rat Cerebrum; Antigen retrieval by boiling in sodium citrate buffer (pH6.0) for 15 min; Antibody incubation with VGLUT1/BNP1 Polyclonal Antibody, Unconjugated (TMAB-01962) at 1:100 overnight at 4°C, followed by conjugation to the SP Kit (Rabbit) and DAB staining.
3. Paraformaldehyde-fixed, paraffin embedded Rat Cerebellum; Antigen retrieval by boiling in sodium citrate buffer (pH6.0) for 15 min; Antibody incubation with VGLUT1/BNP1 Polyclonal Antibody, Unconjugated (TMAB-01962) at 1:100 overnight at 4°C, followed by conjugation to the SP Kit (Rabbit) and DAB staining.



Application: ELISA,IF,IHC-Fr,IHC-P,WB

A DRUG SCREENING EXPERT

Recommended ELISA=1:5000-10000; IF=1:100-500; IHC-Fr=1:100-500; IHC-P=1:100-500; WB=1:500-1000

Properties

Stability & Storage: Store at -20°C or -80°C for 12 months. Avoid repeated freeze-thaw cycles.

Shipping: Shipping with blue ice.

Antigen Details

Immunogen: KLH conjugated synthetic peptide: human VGLUT1/BNP1

Antigen Species: Human

Gene ID: 57030

Uniprot ID: Q9P2U7

Synonyms: VGLuT1;VGLU1;Solute carrier family 17(sodium-dependent inorganic phosphate cotransporter), member 7;Vesicular glutamate transporter 1;Slc17a7;BNPI;Brain-specific Na(+)-dependent inorganic phosphate cotransporter;Brain specific Na dependent inorganic phosphate cotransporter;Solute carrier family 17 member 7;Brain specific Na(+)-dependent inorganic phosphate cotransporter

Research Background

The protein encoded by this gene is a vesicle-bound, sodium-dependent phosphate transporter that is specifically expressed in the neuron-rich regions of the brain. It is preferentially associated with the membranes of synaptic vesicles and functions in glutamate transport. The protein shares 82% identity with the differentiation-associated Na-dependent inorganic phosphate cotransporter and they appear to form a distinct class within the Na⁺/Pi cotransporter family. [provided by RefSeq, Jul 2008]

Inhibitor · Natural Compounds · Compound Libraries · Recombinant Proteins

This product is for Research Use Only · Not for Human or Veterinary or Therapeutic Use

Tel:781-999-4286 E_mail:info@targetmol.com Address:34 Washington Street,Wellesley Hills,MA 02481
