

Anti-VEGFR1/FLT-1 Polyclonal Antibody

Product Details

Ig Type: IgG
Reactivity: Human,Rat,Mouse
Molecular Weight: Theoretical: 147 kDa. Actual: 180 kDa.
Purification: Protein A purified

Applications

1. Paraformaldehyde-fixed, paraffin embedded (human liver carcinoma); Antigen retrieval by boiling in sodium citrate buffer (pH6.0) for 15 min; Block endogenous peroxidase by 3% hydrogen peroxide for 20 min; Blocking buffer (normal goat serum) at 37°C for 30 min; Antibody incubation with (VEGFR1) Polyclonal Antibody, Unconjugated (TMAB-01955) at 1:200 overnight at 4°C, followed by operating according to SP Kit (Rabbit) instructions and DAB staining.

Verified Activity:

2. Sample:

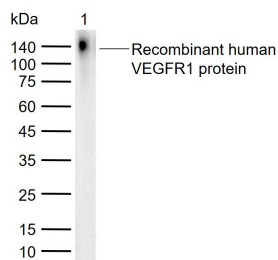
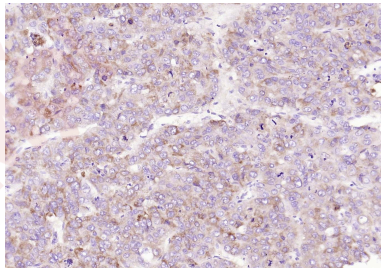
Lane 1: Recombinant human VEGFR1 protein, C-His (HEK293)

Primary: Anti-VEGFR1 (TMAB-01955) at 1/1000 dilution

Secondary: IRDye800CW Goat Anti-Rabbit IgG at 1/20000 dilution

Predicted band size: 147 kDa

Observed band size: 140 kDa



Application: IF,IHC-Fr,IHC-P,WB

Recommended WB: 1:500-2000; IHC-P: 1:100-500; IHC-Fr: 1:400-800; IF: 1:100-500

Properties

Stability & Storage: Store at -20°C or -80°C for 12 months. Avoid repeated freeze-thaw cycles.

Shipping: Shipping with blue ice.

Antigen Details

Immunogen: KLH conjugated synthetic peptide: mouse VEGFR1

Antigen Species: Mouse

Synonyms: VEGF R1;FLT1;FRT;Flt-1;VEGFR1;FLT

Biology Area: Response to hypoxia,VEGF,Angiogenic growth factors,Growth factors,Endothelial Cell Markers, VEGF Receptors,Endothelium,Hypoxia,Cancer,VEGF,Tyrosine Kinases

Research Background

VEGF Receptor 1 (also known as FLT) belongs to the src gene family and shows tyrosine protein kinase activity that is important for the control of cell proliferation and differentiation. The protein acts as a receptor for VEGF, VEGFB and PGF. An alternatively spliced form of the gene produces a soluble protein (sFlt1) which binds vascular endothelial growth factor (VEGF) with high affinity. sFlt1 has a higher affinity for VEGF indicating that it may function as an inhibitor in the VEGF response. VEGF Receptor 1 is specifically expressed in most vascular endothelial cells and peripheral blood monocytes.

Inhibitor · Natural Compounds · Compound Libraries · Recombinant Proteins

This product is for Research Use Only · Not for Human or Veterinary or Therapeutic Use

Tel:781-999-4286 E_mail:info@targetmol.com Address:34 Washington Street,Wellesley Hills,MA 02481