

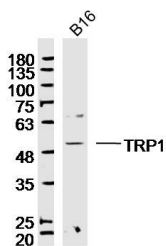
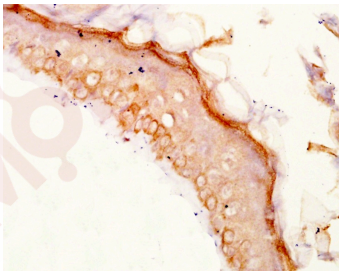
Anti-TYRP1 Polyclonal Antibody

Product Details

| | |
|-------------------|---------------------------------------|
| Ig Type: | IgG |
| Reactivity: | Human,Mouse (predicted:Rat,Cow,Horse) |
| Molecular Weight: | Theoretical: 58 kDa. Actual: 55 kDa. |
| Purification: | Protein A purified |

Applications

1. Paraformaldehyde-fixed, paraffin embedded (Human skin); Antigen retrieval by boiling in sodium citrate buffer (pH6.0) for 15 min; Block endogenous peroxidase by 3% hydrogen peroxide for 20 min; Blocking buffer (normal goat serum) at 37°C for 30 min; Antibody incubation with (Tyrosinase-related protein 1) Polyclonal Antibody, Unconjugated (TMAB-01926) at 1:400 overnight at 4°C, followed by a conjugated secondary antibody for 20 min and DAB staining.
2. Sample: B16 (Mouse) cell Lysate at 40 µg
Primary: Anti-TRP1 (TMAB-01926) at 1/300 dilution
Secondary: IRDye800CW Goat Anti-Rabbit IgG at 1/20000 dilution
Predicted band size: 58 kDa
Observed band size: 55 kDa



Application: IF,IHC-Fr,IHC-P,WB

Recommended WB: 1:500-2000; IHC-P: 1:100-500; IHC-Fr: 1:100-500; IF: 1:100-500

Properties

Stability & Storage: Store at -20°C or -80°C for 12 months. Avoid repeated freeze-thaw cycles.

Shipping: Shipping with blue ice.

Antigen Details

Immunogen: KLH conjugated synthetic peptide: human TYRP1

Antigen Species: Human

Gene ID: 7306

Uniprot ID: P17643

Synonyms: CAS2;TRP;OCA3;TYRP;TRP1;b-PROTEIN;TYRRP;CATB;GP75

Research Background

TRP1 is a melanosomal enzyme that belongs to the tyrosinase family and plays an important role in the melanin biosynthetic pathway. Defects in this gene are the cause of rufous oculocutaneous albinism and oculocutaneous albinism type III.

Inhibitor · Natural Compounds · Compound Libraries · Recombinant Proteins

This product is for Research Use Only · Not for Human or Veterinary or Therapeutic Use

Tel:781-999-4286 E_mail:info@targetmol.com Address:34 Washington Street,Wellesley Hills,MA 02481