

Anti-Tyrosine Hydroxylase Polyclonal Antibody 2

Product Details

Ig Type:	IgG
Reactivity:	Mouse,Rat (predicted:Human)
Molecular Weight:	Theoretical: 60 kDa.
Purification:	Protein A purified

Applications

1. Sample:

Cerebrum (Mouse) Lysate at 40 µg

Primary: Anti-Tyrosine Hydroxylase (TMAB-01925) at 1/1000 dilution

Secondary: IRDye800CW Goat Anti-Rabbit IgG at 1/20000 dilution

Predicted band size: 60 kDa

Observed band size: 56 kDa

2. Sample:

Adrenal gland (Rat) Lysate at 40 µg

Cerebral cortex (Rat) Lysate at 40 µg

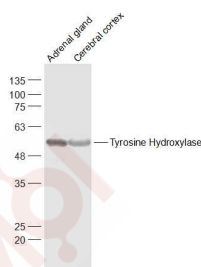
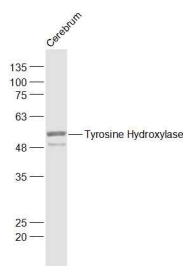
Verified Activity: Primary: Anti-Tyrosine Hydroxylase (TMAB-01925) at 1/1000 dilution

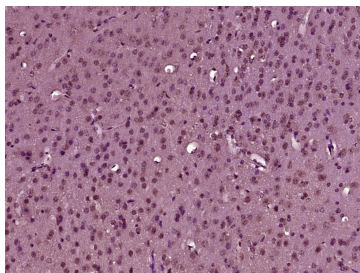
Secondary: IRDye800CW Goat Anti-Rabbit IgG at 1/20000 dilution

Predicted band size: 60 kDa

Observed band size: 56 kDa

3. Paraformaldehyde-fixed, paraffin embedded (Mouse brain); Antigen retrieval by boiling in sodium citrate buffer (pH6.0) for 15 min; Block endogenous peroxidase by 3% hydrogen peroxide for 20 min; Blocking buffer (normal goat serum) at 37°C for 30 min; Antibody incubation with (Tyrosine Hydroxylase) Polyclonal Antibody, Unconjugated (TMAB-01925) at 1:400 overnight at 4°C, followed by operating according to SP Kit (Rabbit) instructions and DAB staining.





Application: IF,IHC-Fr,IHC-P,WB

Recommended WB: 1:500-2000; IHC-P: 1:100-500; IHC-Fr: 1:100-500; IF: 1:100-500

Properties

Stability & Storage: Store at -20°C or -80°C for 12 months. Avoid repeated freeze-thaw cycles.

Shipping: Shipping with blue ice.

Antigen Details

Immunogen: KLH conjugated synthetic peptide: human TH

Antigen Species: Human

Gene ID: 7054

Uniprot ID: P07101

Synonyms: tyrosine hydroxylase

Biology Area: Noradrenaline,Dopamine,Soma marker,Hypoxia,Hormone biosynthesis,Response to hypoxia,
Hormone biosynthesis

Research Background

The protein encoded by this gene is involved in the conversion of tyrosine to dopamine. It is the rate-limiting enzyme in the synthesis of catecholamines, hence plays a key role in the physiology of adrenergic neurons. Mutations in this gene have been associated with autosomal recessive Segawa syndrome. Alternatively spliced transcript variants encoding different isoforms have been noted for this gene. [provided by RefSeq, Jul 2008]

Inhibitor · Natural Compounds · Compound Libraries · Recombinant Proteins

This product is for Research Use Only · Not for Human or Veterinary or Therapeutic Use

Tel:781-999-4286 E_mail:info@targetmol.com Address:34 Washington Street,Wellesley Hills,MA 02481
